

Spring 2009

# in Unison

News for the Friends of Unity Health Foundation

*Unity Health System Annual Report included in this issue!*

I am recommending **Jim Brough**, care assistant at Unity Hospital, as an Angel nominee. He was

polite,  
professional, and extremely  
kind and compassionate...

**Dr. Claudia Hriesik** is my nomination and the person who made a difference giving me the best possible care on a daily basis. She took the time to sit down and explain any procedures she was going to do. She always shook hands when she left and gave a little wink...



**Melinda Benman** at Unity Family Medicine at St. Bernard's is so helpful. She makes me feel calm. I know I can call her anytime and she will always know what to do.

She is so nice...

**Lisa Ryan** made my stay extra special.

She went above and beyond her duties as a nurse and is an exceptional person. She treated me so kindly and was very compassionate when I was having a very bad day.

During the last days of our mother's life, many on your staff at Unity Living Center were angels to her.

**Mary Covington** and **Regina** on days, and **Tammy, Jean, Shamar, Lorraine, and Sandra** on evenings

displayed outstanding and kind care. We witnessed their concern, compassion, and competence. They did all in their power to make her comfortable and to comfort us.

## LETTER FROM FOUNDATION CHAIRMAN AND PRESIDENT

As we strive to fulfill our mission among the current economic storm, we face an environment fraught with many changes and opportunities. We are pleased to report that our donors—realizing that the needs of those we serve are intensifying in this time of challenge—have responded with continued generosity.

During 2008, the Foundation's unrestricted fund raising efforts totaled \$708,000 compared to a budget target of \$698,000. This was made possible, in large part, due to the success of our annual Unity Gala—An Evening to Remember/Hollywood Style—and the 29th annual Ralph P. DeStephano Golf Classic (now renamed the DeStephano Memorial Golf Classic in honor of its namesake and founder, who passed away in July). Response to our 2009 Annual Appeal has exceeded the pace of last year's campaign and PRiSM membership continues to expand as well.

The Foundation's fund balances totaled \$10,316,071 at year's end. This is \$3 million less than the prior year due to a combination of portfolio repositioning, unrealized losses in our endowments, and grant expenses. Nevertheless, we were able to grant \$2,167,412 to Unity Health System in 2008, slightly over \$1 million more than in 2007.

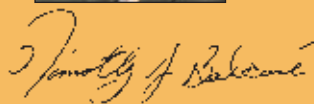
Our campaign for the new Park Ridge Living Center and Transitional Care Center is proceeding favorably, with funding commitments approaching \$3 million against a goal of \$4.1 million. Construction is now fully underway and on schedule for completion during the first quarter of 2010.

Many significant new efforts are helping to increase the Foundation's community of new donors. For example, the Guardian Angel program, introduced last November, enables grateful patients to recognize a physician, staff member, or volunteer who has provided exemplary care. So far, 190 individuals have been recognized with the Guardian Angel pin; several have been recognized more than once. And a number of these grateful patients have become donors.

The work of Unity Health Foundation continues through the generous support of our many donors. Thank you for what you have done and continue to do to further our mission of serving the patients and clients of Unity Health System. We deeply appreciate your confidence and your support.



Leon T. Sawyko  
*Chairman*  
Executive/Philanthropy Committee



Timothy J. Balconi  
*President*  
Unity Health Foundation

## *Park Ridge Auxiliary Donates Nearly \$170,000 in 2008*

Since 1976, the Park Ridge Auxiliary has donated \$4,706,899 to support patient care needs at Unity Health System. At its Annual Meeting in January, newly-appointed Auxiliary President Edie Ellis announced that the Auxiliary had donated nearly \$170,000 in 2008. Donations funded nearly \$50,000 of 'Wish List' requests for patient and resident care-related items, including specialized wheelchairs, pressure-reducing mattresses, bariatric recliners, and pulse oximeters. Additionally, the Auxiliary funded over \$100,000 for its pledge to the Unity Hospital Emergency Center Expansion and Renovation; \$7,000 for a 'smart board' for nursing education; \$500 for a Medical Careers Scholarship; and \$685 for holiday stockings for newborns in the August Family Birth Place.

The money given to Unity is raised through the Auxiliary's Park Place Gift Shop, Tel-Pho patient television and telephone service, annual Lights of Love program, and several other fundraisers each year.



### **Sharlene Penna recognized for service as Auxiliary president**

**At Unity's annual recognition luncheon for the Park Ridge Auxiliary, Unity President Tim McCormick (right) and Unity Health Foundation President Tim Balconi (left) presented a plaque in honor of Sharlene Penna, outgoing Auxiliary president. The plaque is now installed in the South Concourse at Unity Hospital.**

The Unity Health Care Group board of directors recently passed a resolution in Mrs. Penna's honor— noting that she has been instrumental in guiding the growth and notorious success of the Park Ridge Auxiliary. Her leadership roles include serving as president in 1988 and 1989, and again from 2000 to 2008.

"During Sharlene's recent eight years as president, the Auxiliary has contributed nearly \$2 million to provide for patient and resident care," Balconi said. "We express our grateful appreciation to Sharlene for her many years of dedicated service and generosity to Unity and to those we serve," added Unity President Tim McCormick.

## *What's new on The Web*

Go to our web site at [www.unityhealth.org/foundation](http://www.unityhealth.org/foundation) to make a gift, read InUnison, name a Guardian Angel, learn about upcoming Foundation special events, and more! Would you like to receive future issues of *InUnison* electronically? Contact us at [fundraiser@unityhealth.org](mailto:fundraiser@unityhealth.org) with that or other requests or comments.

## *Unity's Legacy Society— Securing the Future of Patient Services at Unity Health System*

**T**he Legacy Society honors individuals who have chosen to include the Unity Health System in their estate plans or in any planned gift, including a charitable gift annuity or charitable remainder trust. While every donation is valuable, planned gifts are especially important as they enable us to more accurately and confidently build Unity's future.

If you have already named Unity as a beneficiary in your estate plans but have not told us, we would like to hear from you so that we may properly recognize you and invite you to next year's annual dinner. To learn more about bequests and other planned gift opportunities, contact Bill Pritchard in the Unity Foundation office at 723-7050 or [wpritchard@unityhealth.org](mailto:wpritchard@unityhealth.org).

# LEGACY

## Spotlight



### *Andy August*

**A** second generation Unity volunteer and supporter, Andy August is a very active member of the Unity Health System board of directors and of Unity Health Foundation's Executive Philanthropy Committee. Andy's father, Charles August, and uncle Burt August were long-time members of various Unity Health System boards. The August Family has made many significant contributions to Unity, including the August Family Birth Place at Unity Hospital. Andy has continued the tradition of involvement and support through his hard work on the Park Ridge Living Center project, and tireless support of all of Unity's special events. Andy and his wife, Anne, own the Park Avenue Bike Shop with two locations, in Pittsford and in Henrietta. The couple has three children. Andy is an enthusiastic bicyclist and skier.

## *In Memorium: Dr. Browning*

**F**rank Browning, M.D. passed away in December 2008. “Through the years, Unity was fortunate to count Dr. Browning as a true friend, and one of our finest and most dedicated advisors,” said Unity President Tim McCormick.



*Frank Browning, M.D.*

Dr. Browning joined the board of Park Avenue Hospital in August 1972, and was actively involved in the decision to relocate that facility to the Park Ridge Health Care Campus. He continued his involvement as a board member of Park Ridge Hospital when it opened in 1975, and served as chairman of the Hospital from 1981 until 1986.

As the first physician appointed to the board and as medical director of Eastman Kodak Company, Dr. Browning provided invaluable insight and guidance to the Health System during a time of dramatic growth. In recognition of his leadership and many achievements, he was honored by the Hospital Association of New York State as Trustee of the Year in 1988, an honor which meant a great deal to him. Since that time, Dr. Browning provided counsel on a number of matters, including the formation and development of Unity Health System.

The Frank Browning, M.D. Memorial Fund has been established at Unity Health Foundation. For more information, call 723-7050 or visit [www.unityhealth.org/foundation](http://www.unityhealth.org/foundation).



### **Unity's Healthy Start Center Receives the Gift of Warmth from "Project Linus"**

**I**n February, Lucille Arthmann, on behalf of the Rochester chapter of "Project Linus," donated 50 beautifully hand-made new blankets to Alise Gintner, program manager of the Unity Healthy Start Center. The blankets are a part of the layette package provided to mothers-to-be who successfully complete an eight-week pregnancy education program. This is the second time that Project Linus has donated blankets to the Center. The women who receive these blankets are thrilled to have something so special for their new babies.

To date, Project Linus has donated over 12,000 blankets to local organizations. Founded in 1995, the mission of Project Linus is to provide a sense of security, warmth, and comfort to children who are seriously ill, traumatized, or otherwise in need through the gifts of new, handmade blankets and afghans, lovingly created by volunteer "blanketeers." Log on to [www.projectlinus.org](http://www.projectlinus.org) for more information.

Donations of yarn, fabric, and fleece can be directed to Kate Bruni of the Unity Health Foundation on behalf of Project Linus. Kate can be reached at 585-723-7867 or [kbuni@unityhealth.org](mailto:kbuni@unityhealth.org)



# Donor Dollars in Action

## Mendick Family Foundation Supports Heart Care

The Mendick Family Foundation recently made a gift of \$150,000 to support construction of a new Cardiac Catheterization Lab at Unity Hospital. In honor of the gift, the Lab will be named the Theodore and Cashmere M. Mendick Cardiac Catheterization Laboratory.

## SMART Technology enhances clinical education

Six conference rooms at Unity Hospital were recently outfitted with new, state-of-the-art SMART boards— thanks to support from the Maxine Davison Foundation and the Department of Surgery. These interactive, electronic whiteboards enhance classroom instruction and learning. As one example, instructors can interact with evidence-based resources and other web sites on the Internet. These SMART boards will be used in the clinical and continuing education of Unity physicians, nurses, and other clinicians, as well as nursing students and medical residents.



(l to r) Tim Balconi, Unity Health Foundation President, Tim McCormick, Unity Health System President and CEO, and M&T Bank Representatives Dan Burns, Regional President, Rochester Region; John Morsch, Administrative Vice President, Middle Market Lending; and Tim Denniston, Vice President, Middle Market Lending

The M&T Charitable Foundation made a grant of \$10,000 in support of Unity’s Healthy Start Center. Since its establishment in 1997, Healthy Start’s mission has been to decrease infant mortality, improve birth outcomes, and nurture healthy family lifestyles. A range of programs and services, including pregnancy and parenting education, adult literacy, and job skills training, are provided to women who reside in one of nine zip codes in the city of Rochester.



Deb Wilson



Kristine Pope



Bob Venishel



Deb Zajac



Mary Yanklowski



Jodi Smith



Susan Natalie



Elena Klish



Lynn Blommer



Linda Hagan



Michael Steinman



Kim Strouse

Twelve Unity employees recently received tuition assistance scholarships totaling \$17,700, including \$7,500 from the Maxine Davison Education Fund. Each of the employees is currently enrolled in a nursing education program in the Rochester area. Recipients were recommended for the scholarship by their manager in recognition of their superior work performance and dedication.

## Ways to Give

**Matching Gifts** Many companies match an employee's gift. Sometimes spouses and retirees also can participate in a matching gift program.

**Stock Gifts** The advantage of a stock gift is that it enables a donor to avoid capital gains on the appreciation in market value of the shares. If you held the shares for more than one year, you can generally deduct the full fair market value of the donated shares.

**Planned Giving** Planned giving includes gifts through a bequest, charitable gift annuity, charitable remainder trust, charitable lead trust, life insurance and real estate.

**Bequests** Bequests are made through your Last Will and Testament and can specify a dollar amount, percentage or portion of the donor's estate, or items of property. Bequests reduce the size of one's taxable estate, thereby reducing estate taxes. A donor may specify that a bequest be used for scholarships, buildings, endowment or facilities.

**Charitable Gift Annuity** A charitable gift annuity is where a donor will transfer property (cash, securities, real estate) to the charity in exchange for a fixed dollar payment during the donor's lifetime. A charitable gift annuity enables a donor to receive a guaranteed fixed income that is partially tax-free. A charitable gift annuity also allows the donor to avoid capital gains tax on appreciated property and removes the donated property from the donor's federal and probate estate.

**Charitable Gift from an IRA** Individuals over 70½ may designate direct contributions from an IRA to a charitable organization. This counts against the mandatory withdrawal and has the impact of reducing taxable income.

**Charitable Remainder Trust** A charitable remainder trust, pays income to you or a beneficiary for a certain period of time, after which the property in the trust passes to a designated charity. Contact your attorney or tax advisor for additional information about charitable trusts.

**Charitable Lead Trusts** A charitable income, or lead, trust is established when you transfer property to an irrevocable trust—one that cannot be changed—which generally pays income interest to a designated charity. The remainder interest in the trust later returns to you or someone you designate.

**Life Insurance** A gift of life insurance is a vehicle that allows a donor to pass on part of his or her estate with minimum cost, maximum benefit, and often an estate tax advantage. A donor is able to claim a charitable deduction for approximately the policy's cash surrender value, and the proceeds are removed from his or her estate.

**Real Estate** Gifts of real estate include a principal residence, vacation home, farm, commercial property and land. A donor will receive an income tax deduction as well as a reduction or elimination of a capital gains tax.

Each of these planned gifts has benefits for both the donor and the charitable organization. For more information, please call Unity Health Foundation at 723-7050.

For more information on Annual Giving, call 723-7050.

## Support Unity Health System Through Your United Way Donation!

As the United Way of Greater Rochester gears up for its 2009 campaign, it's important to remember that Unity Health System is a United Way Donor Choice Designation Agency. This means you can support the United Way while still supporting the Unity program of your choice! You can specify one of seven separate designations on your United Way pledge form, and your United Way pledge goes directly to whichever program you wish to support. It's a win for everyone!

### Unity Health System Program & Donor Choice Codes

Edna Tina Wilson Living Center	2011
Park Ridge Child Care Center	1613
Park Ridge Commons	2336
Park Ridge Living Center	1818
Unity Chemical Dependency	1816
Unity Hospital	1815
Village at Unity	2337



# 2008 Annual Report to

## LETTER FROM UNITY HEALTH SYSTEM CHAIRMAN AND PRESIDENT

### Unity Health System Unity Health Foundation Board of Directors

#### Officers

Robert Oppenheimer, Chairman  
Steven Sauer, Vice Chair  
Leon T. Sawyko, Vice Chair  
Timothy R. McCormick,\* President  
Jeffrey Mapstone, Treasurer  
William Neilson, Secretary  
Warren Hern,\* Executive Vice President & Chief Financial Officer  
Sandra MacWilliam, Executive Vice President, Center for Aging & Continuing Care Services  
Stewart Putnam,\* Executive Vice President & Chief Operating Officer

#### Directors

Robert Agostinelli, M.D.	Richard Machemer, Ph.D.
Robert Asbury, M.D.	Michael Maier
Andrew August*	Jagat Mehta, M.D.*
Ralph Esposito	Nagendra Nadaraja, M.D.
Nancy Ferris, Ph.D.	Michael Nuccitelli*
Karen Gallina	Elizabeth Patton, Ph.D.
Michael Graney, M.D.	Thomas Riley*
Frederick Holbrook	Fred E. Strauss
Tarun Kothari, M.D.	Scott Turner
	Patricia H. Wehle

\* Denotes membership on the Executive/Philanthropy Committee. Community members  
Teresa Robach and Leon Salmen serve on the Committee as well.

#### Administrative Officers

Timothy Balconi, President, Unity Health Foundation  
Thomas Crilly, Vice President, Finance & Corporate Controller  
John Glynn, Vice President & Chief Information Officer  
Maryalice Keller, Vice President, Corporate Communications  
Michael Nazar, M.D., Vice President, Primary Care & Community Services  
James Rancourt, Vice President, Human Resources

The myriad events of 2008, near and far, intensified the already enormous complexities faced by health care providers on a daily basis. Unity Health System was certainly no exception. Triple digit inpatient occupancy and Code Red are now the everyday norm. The recession brought more patients in financial need to our doors while the downturn in the economy hampered our access to needed capital dollars. The continuing leadership turmoil in Albany once again delayed any meaningful dialogue about health care reform.

Yet, as we present this Annual Report to our Community, we recognize that all the challenges and difficult decisions we encountered have been offset with a meaningful response or significant achievement. 2008 was remarkable in that regard.

#### Solid financial performance.

In a State whose health system operating margins are the smallest of any in the nation, we are proud to have achieved a record operating surplus. In fact, it was our ninth consecutive year of a surplus. Our continued use of best practices to manage our

business planning, revenue, and expense control included the expansion of LEAN and Six Sigma to more areas of the organization, which helped drive numerous performance improvements—particularly in patient care.

Our positive results span well beyond our financial performance, as patient and resident volumes grew steadily across the Health System. At Unity Hospital, the August Family Birth Place, Joint Replacement Center, and adolescent chemical dependency programs were among those which exceeded targets by a significant amount. Our primary care and Ob-Gyn practices continued to experience positive patient growth as well.

We successfully recruited new physicians to our Medical Staff and expanded our capabilities in some key specialty areas of great importance to our community—geriatrics, perinatal and fetal medicine, and breast reconstruction surgery, to name just a few. The launch of our Spine Center in partnership with a wide range of specialists and surgeons was very well received by our physicians and patients.

A shining example of our

“What lies behind us and what lies before us are tiny matters compared to what lies within us.”

—Ralph Waldo Emerson

# our Community

outreach to special populations is our Deaf Services Home Care Program, which was recognized with NYAHSAs Innovation of the Year Award.

Unity Medical Group is now the largest physician group in New York State to have achieved NCQA Diabetes Physician Recognition Program certification, with internists expertly qualified to provide guidance and care to the alarming numbers of patients diagnosed with diabetes.

ACM Medical Laboratory solidified plans to purchase a partner laboratory in England to enhance its global presence in clinical trials.

## Moving forward to build better care.

A significant number of activities are now underway to enhance our scope of services. Construction to replace the 35-year-old Park Ridge Living Center with an innovative cottage-style design unique to western New York is well underway and will be completed by February 2010.

Unity at Ridgeway, a four-story medical office complex which will house many Unity services and private physician offices,

is a partnership with Broadstone Development. It is under construction and will be ready for occupancy in early 2010. The complex will contain numerous amenities to improve patient convenience and provider efficiency. The project has been lauded by community leaders for incorporating a number of leading-edge eco-friendly features as well.

Though delayed by regulatory reviews, planning continues for the expansion of The Villages, our senior living community on the Unity Park Ridge Campus, to include memory care, sometime in the next 18 months.

The 2020 Commission's intensive review and subsequent endorsement of our modernization and expansion plans for Unity Hospital resulted in State approval to expand badly-needed inpatient capacity. We appreciate the Commission's acknowledgement of Unity's track record of success in meeting the needs of our Westside community. Turmoil in the nation's financial markets and massive reimbursement cuts from New York State have forced us to temporarily postpone our plans. In the interim, we look forward to participating in a series of community health improvement

initiatives being developed to help ease the pressures around hospital overcrowding, and explore ways to expand preventive medicine and access to primary care.

## Our strength lies in our people.

Despite the very high occupancy levels we experienced last year, overall patient satisfaction across the Health System was 98.6%.

Our ability to consistently maintain these levels is further proof of the shared commitment of our staff and physicians to meet the needs of those we serve with superior service and quality in an environment driven by our core values.

Our long-standing commitment to quality improvement and clinical outcomes is evidenced in the report cards we have made available to our community since 2003 at [www.unityhealth.org](http://www.unityhealth.org). This transparency is becoming increasingly important as patients are forced to take on greater responsibility for the cost of their health care, and will prove to be a vital component for community-wide quality alignment and collaboration in the future.

## Poised for continued success.

We are quite proud of all members of our Unity Family who are doing their very best each day — under constant pressure — to serve our community. Their commitment to provide each person we serve with the best possible health care experience is the reason why more and more people are seeking care at Unity.

On behalf of the board of directors and our senior leadership team, we extend our sincere thanks to our donors and our community partners and friends for your continued support of our efforts.

**Robert  
Oppenheimer**  
Chairman  
Unity Health System

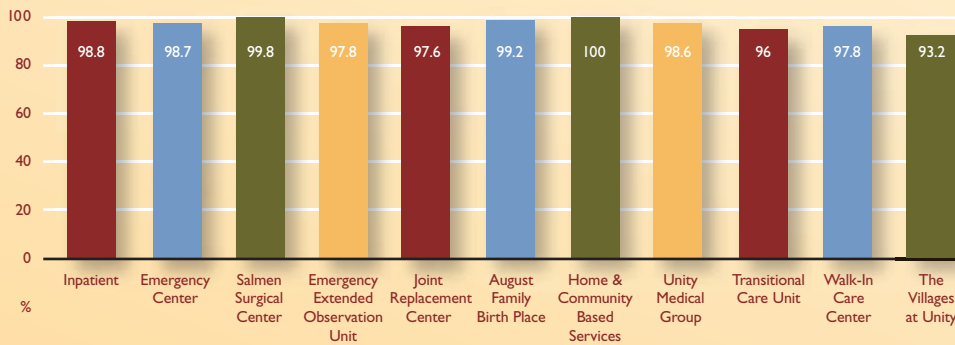


**Timothy R.  
McCormick**  
President  
Unity Health System



## Delivering on our brand promise

Patient and resident satisfaction ratings for 2008 across Unity's major service areas are summarized below.



## Mission

The mission of Unity Health System is to make a positive difference in the lives and health status of individuals in the city of Rochester and western Monroe County. We will educate our community, our providers, and future health care professionals in order to offer the highest quality care to all members of our community, especially those who are underserved and most vulnerable.

## Core Values

Our Core Values guide our work. Unity people strive to consistently demonstrate core values by practicing behaviors each and every day which support the mission and spirit of Unity Health System. These values are:

### RESPECT

To recognize and honor the worth of every person.

### QUALITY SERVICE

To demonstrate excellence in work performed for others.

### EMPOWERMENT

To support and encourage others in furthering their own potential.

### COMPASSION

To respond to every person with sensitivity and understanding.

### CREATIVITY

To be innovative in all that we commit ourselves to.

## UNITY HEALTH FOUNDATION FUNDS OVERVIEW

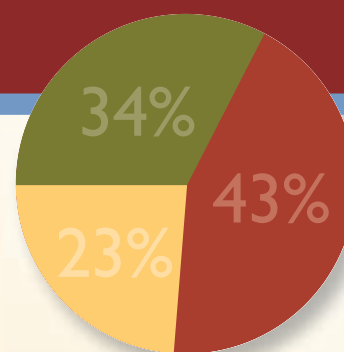
*This graph reflects the total of each Fund, as of December 31, 2008.*

Temporarily  
Restricted Fund  
\$ 3,489,915

Unrestricted Fund  
\$ 2,370,697

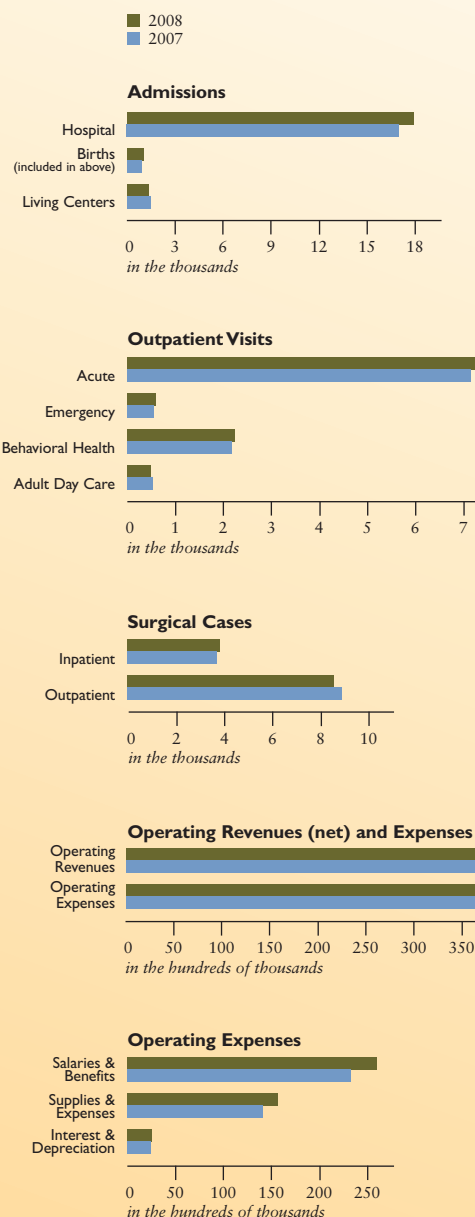
Permanently Restricted Fund  
\$ 4,455,459

**\$10,316,071**



## UNITY HEALTH SYSTEM FINANCIAL REPORT 2008

	2008*	2007
<b>CLIENT VOLUME</b>		
Admissions		
Hospital	18,153	17,538
— Births (included in above)	1,311	1,194
Living Centers	1,415	1,528
Outpatient Visits		
— Acute	747,201	707,928
— Emergency	51,456	50,730
— Behavioral Health	216,395	215,571
— Adult Day Care	43,243	45,017
<b>SURGICAL CASES</b>		
Inpatient	3,886	3,717
Outpatient	8,550	8,891
<b>CONSOLIDATED FINANCIAL INFORMATION</b> (000's omitted)		
Operating Revenues (net)	\$446,902	\$413,289
Operating Expenses		
— Salaries & Benefits	252,628	233,046
— Supplies & Expenses	156,854	145,714
— Interest & Depreciation	24,434	24,409
Total Expenses	<u>433,916</u>	<u>403,169</u>
Profit From Operations	12,986	10,120
Non-Operating Revenue (Expenses)	(2,334)	(556)
Excess of Revenues over Expenses	<u>\$10,652</u>	<u>\$9,564</u>
Bad Debt & Charity Care	12,074	9,890
<b>FOUNDATION</b>		
Grants and awards	\$2,167	\$1,128



\* unaudited results

This list recognizes all contributors to Unity Health Foundation received from January 1, 2008 through February 28, 2009. If your name was inadvertently omitted or misspelled, we apologize, and ask you to please call the Foundation office at (585) 723-7050 or by e-mail at fundraiser@unityhealth.org.

# LIST OF DONORS

## ENDOWMENTS

*Unity Health Foundation endowments are a symbol of profound commitment to health care, and serve as a major resource for the programs and services of Unity Health System.*

Dr. Robert Amberger Memorial  
Rose Mary Battaglia  
Bell Family Endowment  
Jack & Doris Bernard  
Sister Ann William Bradley  
Drs. John S. & Mary Keely Clifford  
Thomas Crane Memorial  
Carmine and Nunziata D'Angelo  
Arthur Dewey Dehey  
Irene A. and Carlo E. DeSantis  
Margaret Lee & John Dessauer  
Charles J. Eagle  
Dr. John L. Fama Memorial  
Augusta and John Fantigrossi Family  
Dr. Fantuzzo  
Dr. John R. Fitzgerald  
Fred W. Geib Endowment  
Greisberger Endowment  
Charles E. Hetterich, Jr.  
Milic Holocek Endowment  
Carolyn Ellen Holtz Endowment  
William & Dorothy Holtz & Family  
Mary L. Gregory  
Adolph & Louise Leyrer  
Ruth Aleine Degraw Libertson and William  
Libertson We Love Babies Fund  
Walter G. and Mary Ellen Lynch  
McKittrick Endowment  
Thomas and Virginia Murray  
Fanny Myers Memorial  
Joan and Angelo Pantaleo  
Joseph P. Pavone, Jr.  
George J. Payne  
Mary Champ Perkins  
The Dr. William & Mrs. Cecilia Petry  
Nursing Tuition Scholarship  
Mr. and Mrs. Leland T. Pflanz  
The Dr. Benjamin and Helen G. Pollack  
Clyde Reynolds Memorial  
Daniel Rothman  
Pearl and Sydney Rubin  
Gerald Francis Ryan, M.D.  
St. Mary's Nurses Alumnae  
St. Mary's Hospital Women's Board  
Carol M. and Alvani D. Santos  
Mary H. Scanlan Endowment  
Seton Branch #16 Endowment  
Lee J. Spahn Endowment  
Dr. Erastus E. Strobino  
Bruce J. Sturm, Sr.  
The Ten Ugly Men Endowment  
Edward and Maxine Thaney  
Dr. Mark Welch  
M.M. Hurley and L.E. Welch  
Mary Ann Wesolowski  
Father Paul G. Wohlrab  
Rose A. Zimmerman

## LEGACY SOCIETY

*The Legacy Society recognizes the many friends and supporters who have chosen to make a planned gift to Unity Health System. These types of gifts include bequests, gift annuities, remainder trusts, and insurance policies. Donors who choose to make a planned gift today are helping to meet the health care needs of tomorrow.*

Mr. Burton S. August Sr.  
Mr. and Mrs. Charles J. August  
Jean G. Boles  
Don and Molly Clark  
Mr. and Mrs. Gerald Copeland  
Mr. and Mrs. Anthony J. Cottrone  
Mr. Mark S. Crane  
Mr. and Mrs. Gordon Doupe  
George Farr  
Mr. Bernard E. Frank  
Mr. and Mrs. Charles R. Frear  
Bruce E. Kaleta  
Warren O. Kamm  
Dr. Richard H. Machemer Jr.  
Mr. and Mrs. David C. Mitchell  
Mr. and Mrs. Olivieri  
Mr. Gerald A. Palmer  
Mr. and Mrs. Angelo D. Pantaleo  
Lee and Joan Salmen  
Carol and Alvani Santos, M.D.  
Mr. and Mrs. Frederick E. Strauss  
Mr. Bruce J. Sturm Sr.  
B.B. Tulloch  
Mr. Scott Turner and Ms. Mary Worboys  
Mrs. John L. Wehle Jr.

## Bequests were received from the following estates:

Marguerite M. Carl  
Marlene DeMattia  
Ralph P. DeStephano  
Albert O. Fenyvessy  
Helen S. Hulse  
Betty J. Palozzi  
Mark W. Welch  
Ransford B. Wilson

## MAJOR GIFTS

*Many individuals and organizations give generously to the programs and departments of Unity Health System.*

### August Family Hospice Fund

Mr. and Mrs. Burton August, Sr.  
Mr. and Mrs. Charles August  
C.J. & B.S. August Family Foundation

### Endovascular Suite and Education Fund

Malur R. Balaji, M.D.  
Mr. Robert Bell  
Endologix

## Helipad

Mr. and Mrs. Charles R. Frear

## Hospital Expansion

Borg & Ide Imaging, P.C.

## Park Ridge Auxiliary Wish List

Park Ridge Auxiliary

## Park Ridge Living Center Replacement Project

Anonymous  
Mr. and Mrs. James H. Chambery  
Daisy Marquis Jones Foundation  
Mr. and Mrs. Bernard E. Frank  
Mr. and Mrs. Charles R. Frear  
Karen and Andrew Gallina  
Gardner Plus Architects, PLLC  
Ellen and Renny Golden, M.D.  
Greece Grange  
The IDE Group, P.C.  
Sandra and James MacWilliam  
Timothy R. McCormick  
MVP Health Care  
Mr. and Mrs. John Olivieri, Sr.  
Mr. Jack O'Neill  
Mr. Robert and Betty Oppenheimer  
Sharlene and Ronald Penna, M.D.  
Lee and Joan Salmen  
The Family of Edwin J. and Lois M. Wegman

## Unity Health System

Anonymous—Healthcare for the Homeless Program  
Bell Family Endowment—Lean Six Sigma Employee Education and Oncology Suite renovations  
Bell Family Endowment—In memory of Patricia Culhane Bell—St. Mary's Oncology Suite renovations  
Brody Charitable Trust—Humanistic Medical Education Fund  
Donald F. and Maxine B. Davison Foundation—Nursing Education Scholarships  
Donald F. and Maxine B. Davison Foundation—Nursing Education Suites  
Fraternal Order of Eagles, NYS Auxiliary—Dept. of Surgery  
M&T Charitable Foundation—Healthy Start Center  
Theodore & Cashmere M. Mendick Foundation, Inc.—Cardiac Cath Lab  
Park Ridge Auxiliary—Nursing Education Suites  
Joseph P. Pavone Jr. Endowment Fund—Adolescent Community Residence  
Rochester Female Charitable Society—Health Call  
Edward & Maxine Thaney Endowment—August Family Birth Place

Edward & Maxine Thaney Endowment—Lean Six Sigma Employee Education  
Fred & Floy Willmott Foundation—Health Call

Woman's Board Endowment—August Family Birth Place

## AN EVENING TO REMEMBER "HOLLYWOOD STYLE"

*The eighth annual Spring Gala, held on Saturday, May 3, 2008 at the Rochester Riverside Convention Center, was enjoyed by more than 1,200 guests. Chaired by Anita and Philip Bonnani, M.D. and Manjula and Jagat Mehta, M.D., the evening featured a cocktail reception followed by a delectable dinner, a fabulous silent auction, and dancing to the Skycoasters. The Gala netted \$104,594. We thank the following companies and individuals for making this a memorable and successful event.*

### Major Sponsor

Sharlene and Dr. Ronald M. Penna

### Title Sponsor

Excellent Blue Cross and Blue Shield

### Platinum Sponsors

The IDE Group, P.C.  
Rochester Brain & Spine Neurosurgery—Dr. Seth M. Zeidman, Dr. John Fahrback, Dr. Roger Ng

### Gold Plus Sponsor

Dr. Balaji /EV3/Endologix

### Gold Sponsors

ACM Medical Laboratory, Inc.  
Cain Brothers  
HCR—Home Care of Rochester  
Interlakes Oncology & Hematology, PC  
JP Morgan Chase Bank  
Lifetime Care Home Health & Hospice Preferred Care  
Red Osier Landmark Restaurant  
Rochester Neurosurgery Partners  
Philip & Ann Wegman

### Silver Sponsors

Bonadio Group  
Center for Urology  
Frontier  
Gardner Plus Architects, PLLC  
Harris Beach, PLLC  
LeChase Companies  
Legends, LLC  
Providium Consulting Group  
Tom Riley and Barbara Kelley

### Bronze Sponsors

Andrew & Anne August  
Tim & Kathy Balconi  
Bank of America  
Boston Scientific  
Robert Biernbaum, D.O.  
Calm & Sense Communications, Ltd.

Chamberlain D'Amanda  
 Thomas and Claire Crilly  
 Stamatia V. Destounis, M.D.  
 & Manuel Matos, M.D.  
 Ernst & Young  
 ESL Federal Credit Union  
 Karen & Andrew Gallina  
 James Haley, M.D.  
 Warren & Beverly Hern  
 Pasquale Iannoli, M.D. & Jennifer Griffith, M.D.  
 Robert Israel, M.D.  
 Albert Jones, M.D.  
 Arthur Lowenthal  
 Jim & Sandra MacWilliam  
 Manning & Napier Advisors  
 Theckedath Mathew, M.D.  
 Tim & Joan McCormick  
 ME Engineering, P.C.  
 Manjula and Jagat Mehta, M.D.  
 Merkel Donohue  
 Monroe Ambulance  
 Nagendra Nadaraja, M.D.  
 Nayef T. El-Daher, M.D.  
 Michael Nazar, M.D. & Catherine Callery, Esq.  
 Nursefinders  
 Orthopaedic Associates of Rochester  
 Osborn, Reed & Burke, LLP  
 Parlec, Inc.  
 Stewart & Terri Putnam  
 Jim & Kathy Rancourt  
 Rochester Business Alliance  
 Rochester Colon-Rectal  
 Rochester Davis Fetch Corporation  
 Rochester Gastroenterology Associates, LLP  
 Dr. & Mrs. Sam A. Sbitany, M.D.  
 Synergy Global Solutions  
 The Pike Company  
 Tomaino Orthopaedic Care for  
 Shoulder, Hand & Elbow  
 Toshiba  
 Unity Cardiology Group  
 Unity Hospitalists  
 Unity Nursery Parkway Pediatrics  
 Unity Pulmonary Medicine  
 Unity Rehabilitation and Neurology  
 University of Rochester Radiation Oncology  
 Verizon Wireless  
 Visiting Nurse Service  
 Wegmans  
 Wellcare of New York  
 Westside Podiatry  
 Dr. & Mrs. Timothy Woodlock  
 Joyce Zimowski

**Individual Sponsor**  
 Carlos Palacio, M.D.

**Individual Patrons**  
 Lou & Ellen Angora  
 Brown & Tarantino  
 John A. Ejaife, M.D.  
 Hari & Sarla Garg  
 Trevor & Yvonne Harrison

LaDieu Associates  
 Norm & Arlene Leenhouts  
 Dr. & Mrs. George nasha  
 Irwin & Patricia Rubien  
 Eric & Margaret Rule  
 Dr. & Mrs. Joseph Salipante  
 Douglas & Penelope Stewart  
 Bob & Amy Tait

**Donations**  
 A.A.I.R., PC  
 Associated Healthcare  
 Dr. & Mrs. William H. Bowen  
 Margaret Cerulli & Veronica Lembo  
 Richard J. Collins  
 Constellation Brands  
 Mr. & Mrs. Don Felter  
 Gloria Hetterich  
 Robert Hurlbut  
 Flora Lombard  
 Penelope Martin  
 Jennifer & David McLernon  
 John & Kristina Rogers

**Silent Auction Donors**  
 ATB Staffing Services  
 Baker Street Bakery  
 BrianTheBrush.com  
 Timothy J. Balconi  
 Bamba Bistrot  
 Kate Bruni  
 EMCO Commercial Flooring, Inc.  
 Five Star Bank  
 Dr. Ronald & Sara Freeling  
 GEVA Theatre  
 Hampton Inn Rochester  
 Hunt Hollow  
 Barbara Hurley/Mary Kay Cosmetics  
 Maryalice Keller  
 Christian David Kolupski  
 Little Theatre  
 Max at Eastman Place  
 Timothy McCormick  
 Nazareth College of Rochester  
 Niagara Falls Golf Club  
 Park Place Gift Shop  
 Pennifer Purses  
 Restaurant 2 Vine  
 RIT Inn & Conference Center  
 Rochester Museum & Science Center  
 Rochester Philharmonic Orchestra  
 Seabreeze Amusement Park  
 Solutions Stuido & Spa  
 State Farm  
 Talbots—Greece  
 Talbots—Pittsford  
 Tantalio Photography  
 TEHO  
 Van Putte Gardens Family  
 The Lodge at Woodcliff

## RALPH P. DESTEPHANO GOLF CLASSIC

Unity Health Foundation extends a sincere "thank you" to our Co-chairs Jim Pavone and Tarak Bolt and all sponsors who helped make our 29th Annual Ralph P. DeStephano Golf Classic on September 8, 2008 a tremendous success! The event was held at Brook-Lea and Ridgemont Country Clubs.

Due to the tremendous support of our many volunteers, generous sponsors, donors, and friends, the 2008 Tournament raised over \$150,000 — an all-time record of support. The following sponsors made this possible:

### Title Sponsors

Excellus BlueCross BlueShield  
 PASCO & Modular Comfort Systems, Inc.

### Diamond/Tee Sponsors

ACM Medical Laboratory  
 Cain Brothers  
 LeChase Construction

### Gold Sponsors

Gardner Plus Architects  
 Toshiba  
 Sail-On Carpets

### Silver Sponsors

Cerner  
 Harris Beach, Plc  
 Medline  
 The Bonadio Group

### 19-Hole Lunch Sponsors

ACM Medical Laboratory  
 Bond, Schoeneck & King, Plc  
 McKesson Automation, Inc.  
 Monroe Ambulance  
 Sail-On Carpets  
 The Ide Group

### Bronze Sponsors

Alerton  
 Carestream Health  
 ESL Federal Credit Union  
 Frontier Communications  
 McQuay  
 Pike Company  
 Postler & Jaeckle Corp.

### Blue Sponsors

M/E Engineering  
 Broadstone Real Estate,  
 CB Richard Ellis/Pioneer Management Group  
 Entre Computer  
 Fibertech  
 Gallina Development Corp.  
 Installers Warehouse  
 Iron Mountain  
 Jim Rancourt  
 Johnston Paper

LaDieu Associates P.C.  
 LPA Systems  
 M&T Bank  
 Manitou Concrete  
 Merkel Donohue  
 Monroe Roadways  
 New England Medical Systems Co  
 Park Ave. Bike Shop  
 Ronco Specialized Systems  
 SimplexGrinnell, LP  
 Summit Federal Credit Union  
 Synergy Global Solutions, Inc.  
 SYSCO  
 Time Warner Cable Business Class  
 Timothy Balconi  
 Ultimate Software  
 Upstate Niagara Cooperative, Inc.  
 Verizon Wireless  
 WC Horn, Inc.

### Closest to the Pin

OfficeMax  
 SEI Design Group

### Longest Drive

Image Now By Mahar  
 Kennedy Mechanical  
 Siemens  
 Verizon Wireless

### Driving Range Sponsors

Jensen Engineering P.C.  
 Jachles Imperial, LTD  
 Regional Pavement Maintenance  
 Shaw Industries  
 Steve Leone Asphalt & Landscaping

### Hole Sponsors

Advistor  
 Besam Entrance Solutions  
 B. Giambrone & Co. Inc.  
 Countertop Creations  
 Genesee Regional Bank  
 Genesee Valley Trust  
 Graves Bros. Home Improvement  
 Hewlett Packard  
 Osborn, Reed & Burke  
 PARLEC, Inc.  
 Rochester JetBlak Sealers  
 Rochester Welding Supply  
 State Farm—Van Travis  
 Sywest Medical Technologies  
 The Ogden Group of Rochester, Inc.  
 Turner Engineering PC  
 US Mobility  
 VP Supply Corp.  
 Warrens Paint  
 Window Accents

### Gifts in Kind

ATB staffing Services  
 Black & Blue  
 Brodner Equipment, Inc.  
 Bruce Van Hise  
 Canandaigua National Bank

Carol Kennedy Massage Therapy  
Charisma Jewelers  
Charlotte Appliance  
Genesee Country Village & Museum  
GHX  
Hewlett Packard  
Hunt Hollow  
Loose Ends Vending & Food Service  
Restaurant 2 Vine  
Rochester Americans  
Rochester Museum and Science Center  
Rochester Rhinos  
Scott Miller Salon  
Seneca Park Zoo Society  
Southern Wines  
Tek Systems  
The Source Fine Jewelers  
Timothy Balconi  
Ward and Schmerbeck P.C.  
World Cavalcade of Golf

### Joseph P. Pavone, Jr.

#### Memorial Golf Tournament

*The Joseph P. Pavone, Jr. Memorial Invitational Golf Tournament was held on August 25, 2008 at Shadow Pines Golf Club. Approximately 100 golfers attended and enjoyed a picture-perfect day of golf. The tournament raised funds for the Joseph P. Pavone, Jr. Endowment Fund. This year, the Pavone Family allocated dollars raised to Unity Health Foundation for Unity Chemical Dependency's Adolescent Community Residence to rebuild their gym. The Foundation extends its most sincere thanks to the Pavone Family for their continued support and dedication.*

Maris Systems Design, Inc.  
Shaw Industries  
The Ding Doctor of Rochester, Inc.  
Ms. Anne Marie Allocco  
and Mr. Richard Cavalcanti  
Mr. Brian R. Anderson  
Mr. Gregory J. Angwin  
Mr. Timothy Balconi  
Mr. Richard Barndollan  
Ms. Patricia T. Benson  
Mr. Robert Bottiglier  
Mr. Ronald K. Brandwein  
Mr. Chad J. Buchta  
Mr. Anthony Burgio  
Mr. Brian E. Cieslinski  
Mr. Eugene Cieslinski  
Mr. Brian Cornute  
Ms. Helene R. Diederich  
Mr. Joseph C. Dominick  
Mr. and Mrs. Louis P. Fichter  
Mr. Anthony Gallucci  
Mr. Stephen J. Gascon Jr.  
Mr. and Mrs. Michael Guzylak  
Ms. Carla R. Hulst  
Mr. Jeff Hutson  
Mr. Thomas H. Jackson  
Mr. Richard Jacobs  
Mr. James A. Judson Sr.  
Mr. Joseph J. Juzwiak  
Mr. John Kaupp

Mr. Rick LaPaglia  
Mr. Joe LoVerde  
Mr. Thomas Loverde  
Mr. Brian McAfee  
Mr. Timothy R. McCormick  
Mr. Kurt Miller  
Mr. Thomas Mulvehill  
Mr. Kevin Murray  
Mr. Patrick Olszewski  
Mr. and Mrs. James Pavone  
Mr. and Mrs. Joseph Pavone  
Mr. and Mrs. Michael Pavone  
Mr. Steven J. Pavone  
Mr. Theodore Pittinaro  
Mr. Charles Plummer  
Mr. Joe Rizzo  
Mr. John V. Sally  
Mr. John Samperi  
Mr. John M. Scatigno, Esq.  
Mr. Brian Siliwoski  
Mr. Gregory Simons  
Ms. Kenna Smith  
Mr. Kenneth G. Strickland  
Mr. George VanDerWoude  
Mr. John VanDerWoude

### Thomas & Marlene Crane Memorial Golf Tournament

*The 13th Annual Thomas and Marlene Crane Memorial Golf Tournament was held at Victor Hills Country Club in August. Proceeds are held in the Thomas I. Crane Fund through Unity Health Foundation. This Fund enables the Oncology Department to purchase medications for indigent patients, and to provide services to ease the comfort of patients and their families. Mark Crane, along with his family, organizes this tournament annually in memory of his parents. This year's tournament raised \$15,000.*

*To Mark Crane and his family, on behalf of Unity Health Foundation and all the patients and their families who have utilized the Oncology Department of Unity Health System, we offer you a heartfelt thank you!*

## UNITY HEALTH FOUNDATION ANNUAL APPEAL DONORS

### PRISM

#### Benefactor (\$5,000+)

Mr. Burton S. August Sr.  
Mr. Robert Bell  
Harris Beach PLLC  
Joseph Turri and Leon T. Sawyko  
Mr. Warren Hern  
Dr. and Mrs. David Hsi  
Elliott and Debby Landsman  
Jeff and Linda Mapstone  
Mr. and Mrs. Timothy R. McCormick  
Mr. and Mrs. John Olivieri Sr.  
Mr. and Mrs. David A. Patton  
Deborah N. Ronnen  
Mr. and Mrs. Philip R. Wegman

### PRISM

#### Patron (\$2,500 – \$4,999)

Dr. and Mrs. Robert Asbury  
Julius K. Avorkliyah, M.D.  
Mr. and Mrs. Timothy J. Balconi  
Mr. and Mrs. Charles S. Brown Jr.  
J. Stephen and Janice Carges  
Mr. and Mrs. Anthony J. Cottrone  
Dr. John and Satira D'Souza  
Mr. Angelo P. Gallina  
Mr. David B. Gardner  
R. Wayne and Beverly LeChase  
Sandra and James MacWilliam  
Mr. Jack O'Neill  
Dr. and Mrs. Carlos Palacio  
Mr. Stewart C. Putnam  
Thomas P. Riley and Barbara M. Kelley  
Mr. and Mrs. Robert C. Tait  
Mrs. Pat Woodlock

### PRISM

#### Member (\$1,000 – \$2,499)

Dr. and Mrs. Robert Agostinelli  
Dr. Marvin and Frederica Amstey  
Ms. Joy Anderson  
Dr. and Mrs. Thomas J. Arnone  
Dennis and Barbara Asselin  
Mr. and Mrs. Andrew C. August  
Mr. and Mrs. Charles August  
Mr. and Mrs. Gordon C. Belshaw  
Dr. and Mrs. Philip Bonanni  
Borg & Ide Imaging P.C.  
Keith G. H. Schroeder, M.D.  
Mrs. Jean T. Browning  
and the late Dr. Francis Browning  
Mr. Gavin Brownlie  
Mr. and Mrs. James S. Bruce  
Joe and Connie Capizzi  
Mr. Henry J. Cassia, Ph.D.  
Wajid Choudhry, M.D.  
Mr. and Mrs. G. Thomas Clark  
Mr. and Mrs. Lee M. Colavito  
Mr. Mark S. Crane  
Ann Marie Crilly  
Claire and Tom Crilly  
Dr. and Mrs. Vijay Das  
Mr. and Mrs. Muhammad Dawood  
Dr. Margaret Donahue and Mr. John Tribone  
Dr. and Mrs. John A. Ejaife  
Dr. and Mrs. Bernard J. Farnand  
Joyce and Alinaghi Farrokh, M.D.  
Mr. and Mrs. Donald B. Felter Jr.  
Dr. and Mrs. Jeffrey Fink  
Mr. and Mrs. Timothy Fitzgerald  
Mr. and Mrs. Charles R. Frear  
Mrs. Margaret Freeman  
Nancy A. Gadziala, M.D.  
Karen and Andrew Gallina  
Mr. and Mrs. William Gauthier  
Richard and Marcie Gilmore  
Mr. Arthur Glenz

## Valentine's Day Event—February 2009



*A scrumptious meal was prepared by Unity's Food & Nutrition Services Department. Dwight Barksdale was kept busy at the pasta bar.*



*(l to r) Dr. Robert Freeling, Manjula Mehta, Sara Freeling, and Dr. Jagat Mehta*

Mr. and Mrs. John J. Glynn  
Ellen and Renny Golden, M.D.  
Karen and Stephen Goodman  
Mr. William Goodrich  
Dr. and Mrs. Chris J. Grammar  
Bharat B. Gupta, M.D.  
Dr. and Mrs. James M. Haley  
Mr. Edward Hourihan and Ms. Bridget Dee  
Dr. and Mrs. Robert Israel  
Mr. and Mrs. Richard V. Jasinski  
Albert P. Jones, M.D.  
Mrs. Ernestine Kamp  
Maryalice and Wade Keller  
Mr. and Mrs. Steven Kupfer  
Ms. Phyllis A. Larder  
Ms. Catherine Lee  
Norman and Arlene Leenhouts  
Dr. and Mrs. Gregory Lewish  
Mr. and Mrs. Peter LoFurno  
Hector and Flora Lombard  
Mr. and Mrs. Walter J. Lutz  
Dr. Therese G. Lynch  
Mr. Michael O. Maier  
Mr. Dominick Mancini  
Mrs. Penelope S. Martin  
Manuel M. Matos, M.D.  
and Stamatia DeStounis, M.D.  
Dr. and Mrs. Robert C. McVeigh  
Dr. Jagat and Manjula Mehta  
Mr. Peter Mendick  
Mr. and Mrs. David C. Mitchell  
Richard F. Mittereder, M.D.  
and Virginia M. Clark  
Dr. Nagendra S. Nadaraja  
Michael Nazar, M.D. and  
Catherine Callery, Esq.  
Nephrology Associates  
North Forest Office Providers  
John and Diane Nuccitelli  
Michael and Kathleen Nuccitelli  
Mr. Robert and Betty Oppenheimer  
Mrs. Dawn Padden-Mohr  
Elizabeth Patton, Ph.D.  
Mr. and Mrs. James Pavone  
Dr. and Mrs. Ronald Penna  
Mr. and Mrs. Erich K. Postler  
Mr. William F. Pritchard  
Krishakumar Rajamani, M.D. and  
Elizabeth Rajamani, M.D.  
Mr. and Mrs. James E. Rancourt  
Alan and Janice Resnick  
Mrs. Teresa M. Robach  
Rochester Colon & Rectal Surgeons, P.C.  
Michael J. Graney, M.D.  
Bastian Domajnko, M.D.  
Asim Farid, M.D.  
Mary Lou O'Neill, M.D.  
Rochester Gastroenterology  
Associates, LLP  
Tarun Kothari, M.D.  
Surinder Devgun, M.D.  
Prasad Penmetsa, M.D.  
Dr. Paul and Suzanne Rosenberg  
Patricia F. Rubien and Irwin Rubien  
Dr. and Mrs. Gerald Ryan  
Dr. Joseph and Diane Salipante  
Lee and Joan Salmen  
Mr. and Mrs. Leon T. Sawyko, Esq.  
Pamela and W. Winslow Schrank, M.D.  
Mr. and Mrs. George Shukitis  
Candace S. Smith, R.N.

Dr. and Mrs. David Spector  
Dr. and Mrs. Mark Stenclik  
Mr. and Mrs. Frederick E. Strauss  
Honorable Michael A. Telesca  
Dr. Krishan D. Thanik and Dr. Jaimala Thanik  
Dr. Joan L. Thomas and Mr. Clayton A. Miller  
B.B. Tulloch  
Mr. Scott Turner and Ms. Mary Worboys  
Rosemary Utz, M.D.  
Ms. Assunta Verdi  
Mr. Stephen C. Weber  
Mrs. John L. Wehle Jr. and Dr. Richard  
Machemer, Jr.  
Ms. Janine Wheeler  
Dr. Menteesinot Woldeyohannes and  
Mrs. Kirsten Clements  
Ms. Joyce Zimowski

#### **Partner (\$500 – \$999)**

Mr. Keith W. Amish  
Ms. Kathleen M. Auberger  
Ms. Carol Ayers  
Miss Mildred T. Bohrer  
Eugene Cimino, M.D.  
Marjanne Crino, M.D.  
Ms. Helene R. Diederich  
Mr. and Mrs. Robert Donahue  
Kristie and Tobin Foryt  
Mr. and Mrs. Michael H. Frame  
Greece Grange  
Ruth E. Hetland, M.D.  
Ronen Jhirad, M.D.  
J. Elmore Jones  
Mary Kishlar  
Mrs. Rachel T. LeChase  
Mr. and Mrs. Nelson Leenhouts  
Luke S. Loveys, M.D.  
Michael P. McMullen, M.D.  
Xiaolan Ou, M.D.  
Mr. Steven J. Pavone  
Mr. Christopher Peterson  
Dr. and Mrs. William Pum  
Mrs. Robert Reifsteck  
Ms. Patti Ronsvalle  
Mr. John M. Scatigno, Esq.  
Mr. Kenneth P. Schleich  
Mr. and Mrs. John J. Schwartz  
Dr. and Mrs. Sandy Sorrentino  
Mr. and Mrs. James A. Spitz Jr.  
Mr. and Mrs. Werner W. Spitz  
Kris and Tony Staertow

#### **Associate (\$250 – \$499)**

Mr. Richard Barndollar  
Ms. Patricia T. Benson  
and Mrs. Ishali Bhatia  
Debbie and Jeffrey Blood  
Mr. Chad J. Buchta  
Dr. William A. Ciszewski  
Mr. and Mrs. C. Harley Clarke  
Mr. Herbert Cronk  
Mr. Tad D'Ambrosio  
Mr. Michael Ducey  
Reginald S. Ewing, M.D.  
Nancy and Robert Ferris  
Ms. Sharon A. Finke  
Mr. Stephen J. Gascon Jr.  
David and Susan Gentile  
Mr. David W. Groth  
Andrew J. and Anne Marie Hagler  
John and Kathleen Halstead

Mrs. Beverly A. Hern\*  
Dr. and Mrs. Rory Houghtalen  
Glenn and Cindy John  
Jane and Larry Keller  
Mr. Jack H. Kronenberg  
Dr. and Mrs. Vito Laglia  
Ms. Mary Ann Mack  
Mr. Faheem A. Masood  
Dr. and Mrs. Michael A. Mazza  
Mr. Rob McClung and Ms. Mary Lou Guerinot  
Dana and Freda Miller  
Mr. Mark Murphy  
John C. Ninfo, M.D.  
Ms. Patricia Nowak  
Mrs. Helen E. O'Meara  
Ms. Darla M. Ostrum  
Mr. James C. Paul  
Mr. Mark Peacock  
Ms. Nancy J. Reiss  
Mr. Robert M. Rule  
Mr. Richard Schaeffer  
Mrs. Laura M. Simboli  
Douglas Stewart, Psy.D.  
Dr. Bernard E. Tofany  
Mrs. Deborah C. Tourville  
Mr. Ryan Wilson and Ms. Rachel Petrillo

#### **Friend (\$100 – \$249)**

Mr. and Mrs. Daniel C. Acchione  
Mr. and Mrs. Alfred W. Amberger  
Mr. Brian R. Anderson  
Mr. Gregory J. Angwin  
Celia A. Bachmann  
Ms. Mary Baldwin  
Mr. Ned Ballatori  
John T. Bank, M.D.  
Mr. and Mrs. John M. Barna  
Joan Ann Battersby  
Mr. and Mrs. James C. Bittles  
Mr. Jerold Bock  
Dr. J. Neil Boger  
Ms. Sheila Bonham  
Mr. and Mrs. Gunter P. Borrosch  
Mr. Robert Bottiglier  
Gene and Sally Bour  
Mr. Thomas E. Boyce  
Mr. and Mrs. Gary Bradley  
Mr. and Mrs. Robert W. Brennan  
Ms. Thelma M. Buczynski  
Mr. and Mrs. Mark G. Buonaugurio  
Mr. Anthony Burgio  
Bruce and Marilyn Burkey  
Mr. and Mrs. C. Terence Butwid  
Virginia M. Campbell  
Ms. Patricia A. Carpenter  
Mr. and Mrs. John R. Casement  
Mrs. Irene Cavallaro  
Mr. William H. Chapin  
Mr. Tran M. Chau  
Mr. Brian E. Cieslinski  
Mrs. Sarah S. Clapp  
Mr. and Mrs. Russel L. Coon  
Mr. Brian Cornute  
Mr. Everett Cragle  
Ms. Annette Cranker, L.P.N.  
Ms. Stephanie Crissman and  
Mr. Norman Bauer  
Mr. and Mrs. Robert L. Crowley  
Mr. and Mrs. Pasquale D. Cucinelli  
Susan M. Cupolo, P.A.  
Ala Dahhan, M.D.

Mr. and Mrs. James Dahlheim  
Mr. and Mrs. Gerald F. Daley  
Mr. and Mrs. R. Douglas Daligga  
Mr. and Mrs. Carl T. Dattel  
Ms. Marlene A. Dattilo  
Ms. Paula Stabins Davis  
Ms. Ann Delehant  
Mrs. Irene A. DeSantis  
Mr. Ned E. Desenberg  
Mrs. Jeanne H. Dewan  
Mrs. Priscilla A. Dewey  
Mr. Robert F. Dill  
Mr. Joseph C. Dominick  
Mr. and Mrs. Patrick Doyle  
Ms. Susan J. Eckhardt  
Mr. Leslie Edgcomb  
Wendy Ferrer  
Mr. and Mrs. Louis P. Fichter  
Mr. Gene J. Foster, C.F.A.  
Honorable Evelyn Frazee and  
Mr. Thomas A. Klonick  
Beth Freeling, D.P.M.  
Dr. Ronald and Sara Freeling  
Mr. Anthony Gallucci  
Mrs. Ann S. Garrett  
Mr. and Mrs. John L. Garrett  
Mr. and Mrs. Richard J. Garrett Jr.  
Mr. Donald Gibson  
Mr. and Mrs. Rick Giglio,  
Ms. Diane Hoskins and Susanne Schafers  
Dr. Gerald and Roberta Ginsberg  
Mrs. Mary Jo Gizzi-Anis  
Ms. Elizabeth Gorman  
Barbara and Daniel Gray  
Mr. Robert A. Guistina  
Mr. and Mrs. Michael Guzylak  
Ms. June Guzzino  
Mr. and Mrs. Alfred R. Haas  
Mrs. Julie A. Hamil  
Mr. George W. Hartley  
Mr. and Mrs. Peter T. Head  
Mr. Robert F. Hengenius  
Mr. Bernard Higgins  
Mr. and Mrs. Fred J. Holbrook  
Ms. MaryBeth Hossenlopp  
Mr. and Mrs. Samuel T. Hubbard Jr.  
Ms. Carla R. Hulst  
Mr. Jeff Hutson  
Mr. and Mrs. Bernard J. Iacovangelo  
Ms. Cynthia Jackson  
Mr. Thomas H. Jackson  
Mr. Richard Jacobs  
Mel S. Jacoby, M.D.  
Maria T. Johnson, R.N.  
Mr. and Mrs. Robert M. Johnson  
Mr. and Mrs. Frederick A. Johnson  
Mr. James A. Judson Sr.  
Mr. Joseph J. Juzwiak  
Mrs. Eleanor A. Kanous  
Alexander Karlic, M.D.  
Mr. John Kaupp  
Mr. and Mrs. Miles L. Kавaller  
Mr. Justin Kay  
Mr. James E. Kehrner  
Reverend Winfried M. Kellner  
Mr. Bruce D. Kimble  
Mrs. Dawn E. King  
Mr. and Mrs. John W. Kirkland  
Mrs. Clara M. Koerner  
Ms. Carla M. Kraemer  
Mrs. Lisa M. Ladowski, R.N.

Ms. Nancy H. Landas  
Mr. Rick LaPaglia  
Mr. Jonathan P. Levi  
Ms. Joanne Lewers  
Marie M. Libutti  
Ms. Karen Linder  
Ms. Jean E. Loughrey, RPA-C  
Mr. Joe LoVerde  
Mr. Thomas Loverde  
Mr. and Mrs. C. Robert Magee  
Hovaness H. Maronian, M.D.  
William W. Mason  
Mr. Brian McAfee  
Mr. John A. McConachie  
Mr. Richard L. McGaffick  
Douglas C. and Pamela A. Meeson  
Ms. Elizabeth Messe  
Richard W. Millard, Ph.D.  
Mr. Kurt Miller  
Mrs. Elizabeth L. Milsap  
Mrs. Lisa B. Minchak  
Mr. Michael Miner  
Ms. Mary P. Morrell  
Dr. Karla L. Mulligan  
Mr. Thomas Mulvehill  
Mrs. Shirley L. Munson  
Mr. and Mrs. Edward R. Murdock  
Mr. Kevin Murray  
Mr. and Mrs. Walter Napieralski  
Mr. Patrick Olszewski  
Mr. Angelo Orlando  
Mr. and Mrs. Hans W. Osterhoudt  
Mr. and Mrs. Jacob D. Oukes  
Mr. Darwin Palmiere  
Kathleen Paoletti  
Mrs. Patricia J. Patton  
Mr. and Mrs. James Pavone  
Mr. and Mrs. Joseph Pavone  
Mr. and Mrs. Michael Pavone  
Mr. Douglas H. Pearson  
Mr. and Mrs. Edward Pero  
Ms. Nancy F. Piccarreto  
Mr. and Mrs. Steven L. Piedmont  
Mr. and Mrs. John P. Pioli  
Mr. Theodore Pittinaro  
Mr. Charles Plummer  
Mr. Michael K. Quinn  
Mrs. Jeanne S. Randall  
Mr. and Mrs. Edwin G. Ranous  
Mr. and Mrs. Bret W. Read  
Ms. Tracy A. Ricci  
Mr. Joe Rizzo  
Mr. and Mrs. Nathan J. Robfogel  
Kathleen R. Ross  
Lorraine A. Roth-Moyo, M.D.  
Mrs. Gloria M. Ryan  
Mr. John V. Sally  
Peggy and Jim Salone  
Ms. Luna Samman  
Mr. John Samperi  
Mr. and Mrs. Jeffrey R. Sawyer  
Ms. Elizabeth Schmidt  
Mrs. Tracy Scholze  
Mrs. Sophie C. Schubert  
Vivian J. Schultz  
Ms. Susan S. Schweitzer  
Mr. Steven J. Scipioni  
Katie Scranton  
Joan E. Segerson  
Mrs. Margaret E. Seidel  
Mrs. Jeanne M. Shanley  
Mr. and Mrs. Robert W. Shipman  
Mr. Brian Siliwoski

Gregory Simons  
Mr. and Mrs. Robert A. Skitol  
Ms. Kenna A.C. Smith  
Ms. Meredith J. Sorensen  
Mr. and Mrs. Richard H. Spano  
Mr. Mike Steingass  
Mrs. Susan N. Stephen  
Mr. Kenneth G. Strickland  
Dr. Jane Strobino  
Mr. Earl F. Telschow  
Mr. and Mrs. Benjamin L. Ten Eyck  
Mrs. Beth Toly-Hughes  
Mr. and Mrs. Harry P. Trueheart III  
Mr. George VanDerWoude  
Mr. John VanDerWoude  
Marion and George Wacker  
Mrs. Carla Wahls  
Ms. Barbara E. Walsh  
Mr. and Mrs. John Webster  
Mrs. Eleanor M. Welzmueller  
Ms. Mary C. Vezelis  
Ms. Joyce Wichie  
Mr. and Mrs. E. Malcolm Wolcott Jr.  
Mrs. Coreen Wolfanger  
Ms. Kathryn Yacklon

### Supporter (\$50 – \$99)

Ms. Patricia Adesso  
Mr. Norman Amendola  
Mrs. Maria A. Anderson  
Ms. Linda Annlot  
Mr. and Mrs. John H. Atkins  
Ms. Mary Baccaro  
Mr. Barry C. Balonek  
Ms. Felisa Barnes  
Mrs. Genevieve Bartula  
Mr. and Mrs. Bruce B. Bates  
Mr. Sammy F. Baubie  
Mr. Paul Belonga  
Mrs. Anne Berl  
Ms. Iris Betancourt  
Mr. Mark A. Bianchi  
Mrs. Teresa J. Braya  
Mr. and Mrs. Joseph C. Briggs  
Ms. Susan M. Brower  
Mrs. Catherine Brozak  
Ms. Joyce Bumbarger  
Mr. and Mrs. Dennis J. Byrne  
Dr. Robert Calcagno  
Mrs. Florence P. Capo  
Mr. and Mrs. Albert Capone  
Mr. Robert N. Carafice  
Mr. Joseph S. Carges  
Mr. Joseph V. Carr Jr.  
Tran M. Chan  
Mr. Eugene Cieslinski  
Mrs. Toni Cipolla  
Mrs. Lynn P. Clifford  
Ms. Theresa A. Conroy and  
Mr. Raymond H. Ross  
Arthur and Monica Cosgrove  
Mr. and Mrs. John Crowe  
Mr. Richard K. Curtin  
Ms. Janet T. Davis  
G. Robert and Nancy K. Dean  
Oscar A. P. DeCastro, M.D.  
Mrs. Adelia DeGregorio  
James DeLucia, D.D.S.  
Mr. John F. DeMarle  
Mr. and Mrs. Richard Demunck  
Ms. Donna DePeters  
Mr. and Mrs. Anthony DePetres  
Mr. James L. Derleth

Mr. and Mrs. Anthony J. DiBitetto  
Mr. and Mrs. Mendal W. Dick  
Mr. John J. DiRoberto  
Mr. Sammie Drayton  
Mr. and Mrs. Mark A. Drexler  
Mr. and Mrs. Judd F. Dry  
Mr. and Mrs. John R. Duford  
Ms. Virginia Durbin  
Ms. Esther M. Eagan  
Mr. and Mrs. Ronald G. Eddy  
Ms. Cassandra Edmonds  
Mr. and Mrs. David D. Egan  
Mr. and Mrs. John Fallone  
Mr. and Mrs. Peter Feola  
Mary and Frank Ferris  
Mr. and Mrs. William Finnerty  
Mr. and Mrs. Howard O. Fischer  
Mr. and Mrs. John Fisher  
Mr. John B. Fitzsimmons  
Mr. and Mrs. Brian Flanagan  
Mr. William Fowler  
Mr. and Mrs. Edward J. Frame  
Ms. Marilyn B. Fredericks  
Mrs. Mildred Fritz  
Ms. Laurie Fuller  
Ms. Jean M. Fulton  
Ms. Jo Fusilli  
Mr. and Mrs. Gerald H. Gage  
Mr. Donald F. Gagner  
Mr. Fredwin C. Gayton Jr.  
Mr. Ardell B. Gehman  
Ms. Mary Z. Genecco  
Mr. and Mrs. David J. Georger  
Mr. Samuel C. Gillio  
Mrs. Susan C. Goodwin  
Mr. Ronald L. Grudziecki  
Mr. Roy Guess  
Mr. and Mrs. Thomas M. Hally  
Mr. and Mrs. Clark A. Hamilton  
Ms. Karen Z. Hamilton  
Mr. and Mrs. Bernie Hartman  
Mr. Phillip G. Hartman  
Ms. Louise Hayford  
Mrs. Elva Heffner  
Ms. Catherine L. Heier  
Mr. and Mrs. Al Heilman  
Ms. Mary Claire Heise  
Diane and John Hereth  
Mrs. Gloria L. Herrick  
Mr. and Mrs. Stephen Hicks  
Mrs. Minh N. Hubert  
Mrs. Licia C. Infantino  
Mr. and Mrs. William P. Jones  
Ms. Dawn E. Kahler  
Warren O. Kamm  
Mrs. Angela M. Kananen  
Mr. Patrick M. Keefe, Esq.  
Mr. and Mrs. James Keenan  
Ms. Marion W. Kelly  
Mr. Douglas Kern  
Mrs. Joan H. Kerrison  
Mr. and Mrs. Jacob Keymel  
Mr. Ludgard V. Kirstein  
Mr. and Mrs. David L. Klahr  
Mr. Michael J. Knittel  
Ms. Carol-Aynn Knott  
Mr. and Mrs. Paul Koronivsky & Family  
Mr. and Mrs. Stephen Kovaly  
Ms. Lena G. Kroboth  
Dr. and Mrs. Leo R. Landhuis  
Mr. and Mrs. Robert Latella  
Mr. and Mrs. Jeffrey J. LeBlanc  
Ann and Bill Levesque

Mr. Donald M. Lewis  
Terry J. Lockhart  
Mrs. Mary I. Lombano  
Anthony and Loretta Lombardo  
Mr. and Mrs. John Lowden  
Mr. Richard C. Mackey  
Mrs. Sandra MacMillan  
Mr. and Mrs. Richard Maier  
Ms. Anne C. Maiorca  
Mr. and Mrs. Anthony J. Malone  
Ms. Claudia R. Manchester  
Mr. and Mrs. J. Robert Maney  
Mr. and Mrs. James F. Mangan  
Mr. and Mrs. James R. Manuele  
Mr. Terry G. Marsham  
Mr. and Mrs. Gerald W. Martin  
Mr. and Mrs. Walter G. Martin  
Mr. and Mrs. Michael A. Mason  
Puthenpurakal Mathew, M.D. and  
Thankamma Mathew, M.D.  
Mrs. Natalie Mathewson  
Mr. Edward J. Mattson  
Mr. R. Frank Maxson and Ms. Irene Race  
Mrs. Arline M. McAllister  
Mr. and Mrs. Donald L. McCabe  
Mr. and Mrs. John R. McCabe  
Ms. Helen McFall  
Mr. Patrick McGrain  
Ms. Vella Meadows  
Mr. Daniel Meagher  
Mr. Carl E. Meixner  
Helen & Joe Mercier  
Mr. and Mrs. Arthur H. Messinger  
Ms. Carol J. Metcalf  
Mr. Scott Moller  
Ms. Barbara M. Morgan  
Mr. Howard Morse and Ms. Laura Loeb  
Mr. William Mueller  
Mr. Hugh C. Murphy III  
Mr. and Mrs. James C. Murphy  
Mrs. Virginia N. Murray  
Mr. and Mrs. Shane G. O'leary  
Mr. Michael C. O'Mara  
Mr. and Mrs. Robert A. Paduano  
Mr. Frank Palumbo  
Mrs. Helen M. Pancoast  
Mr. Joseph A. Paradiso  
Mr. Brian Parise  
Tejan B. Patel, M.D.  
Mrs. Irene Perevich  
Mr. and Mrs. Peter A. Pizzutelli  
Mr. and Mrs. Bradley E. Pollak  
Ms. Linda Postler  
Ms. Sharon Pucher and Mr. Ed Rieffin  
Mr. and Mrs. Jeffrey Pulver  
Mrs. Masha Rabkin  
Mr. Bruce J. Randall  
Ms. Ruth Lorraine Rappenecker  
Ms. Alva L. Redfield  
Mr. Thomas Reding  
Ms. Kathie L. Reese  
Mark and Karen Reifenstein  
Mr. Warren C. Reigelsperger  
Mr. Rene Reixach  
Mr. and Mrs. Dennis L. Ringer  
Nathan Ritter, M.D.  
Ms. Dorothy R. Roat  
Ms. Ann Rosenzweig  
Ms. Karen Roser  
Ms. Beatrice I. Rufer  
Ms. Kelly Russell  
Mr. and Mrs. John W. Ryan  
Ms. Mary L. Sahrle

Ms. Angela M. Salerno  
Ms. Janet N. Scally  
Mr. and Mrs. Lawrence M. Schenck  
Mr. and Mrs. James T. Schirmer  
Mrs. Ethelyn Schneider  
Mr. and Mrs. Austin Schoeneman  
Mrs. Marie Schwartz  
Mr. Eugene N. Schwenger, C.P.A.  
Mr. Philip Sciortino  
Ms. Kathleen Seitz  
Abrar Shah, M.D.  
Mr. David Sherburne  
Mr. Robert L. Shrader  
John M. Sindoni  
Ms. Karen Sine Pound  
Mrs. Kathleen M. Smith  
Mrs. Ruth A. Smith  
Stella Sorochtey  
Mr. James E. Sowinski  
Mrs. Marilyn K. Spang  
Mr. and Mrs. Thomas F. Spiess  
Mr. Jerald W. Stables  
Mr. David E. Stark  
Mr. Robert H. Stegemann  
Sarah Taylor, M.D.  
Mr. Earl J. Tracy  
Mrs. Muriel Trunfio  
Michael and Barbara Tuszyński  
Mr. Peter J. Uttaro  
Mr. and Mrs. David F. Van Graafeiland  
Ms. Bonnie VanGennip  
Robert R. Vannozzi, M.D. and  
Linda B. Vannozzi  
Mr. Domenick Vitulli  
Ms. Victoria Vose  
Mr. Harry B. Vought  
Mr. and Mrs. Robert L. Walker  
Mrs. Sheila C. Walsh  
Mr. Nguyen N. Webster  
Ms. Margaret Weiss  
Mr. and Mrs. Jon P. White  
Susan B. White  
Ms. Mary Ellen Wilkin  
Mrs. Sylvia S. Willard  
Mr. and Mrs. Alfred R. Wojtylak  
Ms. Katherine R. Woodard  
Mr. and Mrs. Richard K. Woolston  
Ms. Kathleen D. Wurzer  
Mr. and Mrs. Peter F. Yaman  
Mrs. Barbara Zielke

#### **Contributor (\$25 – \$49)**

Mrs. Frances V. Adamski  
Ms. Sue Anne Agone  
Muriel H. Albright  
Ms. Sharon F. Albright  
Ms. Elizabeth Allardice  
Ms. Anne T. Allen  
Ms. Anne Marie Allocco and  
Mr. Richard Cavalcanti  
Mr. and Mrs. Giacomo Amalfa  
Ms. Ann Ambrosi  
Mr. and Mrs. Curtis V. Amesbury Jr.  
Mrs. Frances P. Amico  
Mr. and Mrs. Marko Amidzic  
Mr. and Mrs. Bill Anderson  
Mr. John P. Andreano  
Ms. Margaret Anthony  
Ms. Jacquelyn Ater  
Mrs. Nancy G. Austin  
Mr. and Mrs. John P. Baker  
Mr. and Mrs. Melville Bancroft  
Mr. and Mrs. George L. Barbato

Ms. Anita M. Barker  
Mr. Robert Barone  
Mr. Robert A. Barone  
Ms. Rita E. Barry  
Frank Barski  
Mr. and Mrs. William Bartholomay  
Mr. and Mrs. Richard L. Bates  
Mr. and Mrs. Robert G. Bayer  
Mr. and Mrs. Leonard W. Beagley  
Mr. and Mrs. Daniel R. Beaty  
Mr. and Mrs. Carl W. Behl Jr.  
Ms. Pat Bell  
Charles and Judith Bellanca  
Ms. Marilyn A. Belli  
Mr. and Mrs. William E. Bellows  
Ms. Linda Bennett  
Ms. Stephanie F. Benson  
Mr. and Mrs. R. Alfred Bergeron  
Mr. and Mrs. Roger J. Best  
Mr. Guy M. Bianchi  
Mrs. Amy Bidleman  
Mr. and Mrs. Bruce A. Biller  
Mr. Russell J. Bird  
Mr. and Mrs. Robert C. Blackmun  
Mr. and Mrs. William F. Blake Jr.  
Mr. and Mrs. Carl F. Borzilleri  
Mr. Matthew M. Borzilleri  
Ms. JoAnne Bower  
Mr. and Mrs. Richard J. Boy  
Mr. Richard J. Brady  
Mrs. Paulette P. Briskie  
Mr. and Mrs. John P. Brondon  
Mrs. Dorothy K. Brophy  
Ms. Conswaila Bryant  
Mr. and Mrs. Dennis S. Buchan  
Mr. and Mrs. William Buckingham  
Ms. Carolyn J. Burt  
Mrs. Patricia Ann Byrne  
Mrs. Adua M. Caia  
Mr. Donn J. Calabrese  
Mr. and Mrs. Thomas A. Calabrese  
Mr. and Mrs. Leonard A. Cannizzaro  
Ms. Kathleen Caracci  
The Carcelli Family  
Mr. and Mrs. Norman J. Carney  
Mr. and Mrs. Frank J. Carra  
Mr. and Mrs. Mark A. Carselli  
Mrs. Angelina Carson  
Mr. and Mrs. James R. Carter  
Mr. Cosmo Caterino  
Kay and William Caufield  
Mr. Carl Cavuoto  
Linda J. Cenzi  
Ms. Josephine Z. Cimino  
Mrs. Brita H. Clark  
Mr. and Mrs. Craig D. Clark  
Ms. Nancy L. Clark  
Mr. James W. Coate  
Mr. Richard Coe  
Mr. Carl L. Coloney  
Mr. and Mrs. Art Contreraz  
Russell and Joanne Cordaro  
Mr. and Mrs. Dominick Cordello  
Ms. Christine Corgel  
Mr. Albert A. Cosmano  
Mrs. Barbara J. Cotrona  
Mr. Keith A. Crayton  
Ms. Virginia Crosby  
Mrs. Mary A. Curcio  
Mr. and Mrs. Edward Czarniak  
Mrs. Deborah A. Czeh  
Mr. and Mrs. Joe Czop  
Mary Datsko

Mrs. Mary E. Davis  
Ms. Kelly A. Day  
Ms. Ellen DeBuono  
Mrs. Barbara Dechario  
Mr. and Mrs. Gilbert F. DeGrave  
Ms. Mary Jane DeGrave  
Ms. Stella Dellarocca  
Ms. Alice J. Demers  
Mrs. Lynda C. Denhardt  
Ms. Sandra DiBenedetto-Nacy  
Mrs. Shirley Distaffen  
Mr. and Mrs. G. Ernest Donnan  
Mr. and Mrs. Donald G. DuBiel  
Mr. and Mrs. Jerry A. DuFresne  
Mr. and Mrs. Kenneth N. Dugan  
Pamela Dunning  
Mr. and Mrs. Jack Eberhard  
Mr. John L. Edmeston  
Mrs. Rosanne U. Ehle  
Mr. Robert C. Eich  
Rinkey and Dick Elliott  
Mrs. Edythe W. Ellis  
Rita M. Engel  
Ms. Constance B. English  
Mr. and Mrs. Richard G. Ensmann  
Mrs. Marjorie F. Ensslin  
Gerry and John Ernst  
Mr. and Mrs. Joseph A. Errigo  
Rod and Dorothy Fairhead  
Mr. and Mrs. Samuel F. Falzone  
Mr. William A. Fama  
Jim and Diane Farnsworth  
Mr. and Mrs. Charles Feerick  
Ms. Chana Feinberg  
Mr. and Mrs. J. Arthur Felluca  
Mr. Michael A. Ferraiulo Sr.  
Ms. Carol Ferro  
Mr. Kenneth G. Fettinger, R.N.  
Ms. Mary Ann Fink  
Mr. and Mrs. Bernard Fischer  
Howard O. Fischer  
Mr. and Mrs. Richard L. Fischette  
Ms. Janet W. Fitch  
Ms. Blanche L. Foks  
Ms. Rachael Fooks  
Ms. Thelma Forbes  
Mr. Joseph Fornuto  
Mr. and Mrs. James K. Foster  
Mr. Ezio Frank  
Mr. and Mrs. Eugene E. Fritz  
Mrs. Denyel M. Galle-Mattia  
Ms. Kathy Gamlen  
Ms. Nancy P. Gardone  
Mr. and Mrs. Philip H. Garver  
Mr. and Mrs. Warren B. Gelman  
Dr. and Mrs. Colvin L. Gibson  
Mr. and Mrs. Richard C. Giglio  
Mr. David C. Gilfof  
Mr. and Mrs. Ronald J. Gillenkirk  
Mr. Raymond T. Gilman  
George G. Gleichauf  
Mrs. Beverley J. Goodell  
Mr. and Mrs. Robert Guelzow  
Ms. Agnes Guyette  
Ms. Dorothy A. Hafner  
Mr. and Mrs. Gerard L. Hahn  
Mr. and Mrs. Gordon P. Haines  
Ms. Carol A. Hall  
Mrs. Veronica B. Hall  
Ms. Rose Mary Hardick  
Mr. and Mrs. James B. Harrison  
Mrs. Jane Hart  
Mr. and Mrs. Todd C. Hartman

Ms. Mary C. Hasenauer  
Mr. and Mrs. Raymond J. Hasenauer  
Ms. Julie Hathorne  
Mr. and Mrs. Albert Hauck  
Mr. Herbert J. Hawley  
Mrs. Mary Ann Heinrich  
Mrs. Laurie P. Heise  
Mr. and Mrs. Mitchell R. Hetko  
Mr. and Mrs. Carl E. Hill  
Phyllis Anne Hirsch  
Mr. Lawrence J. Hoh  
Ms. Ruth C. Hoppe  
Mr. and Mrs. Quinton P. Hugger  
Mr. and Mrs. Mark E. Hull  
Mrs. Shirley B. Hulse  
Mr. and Mrs. Ernest J. Ierardi  
Mr. and Mrs. Donald R. Ignatowski  
Mr. and Mrs. Eugene B. Ignatowski  
Mr. and Mrs. David L. Johnson  
Miss Ramona Jorza  
Mr. Edward Kelley  
Mr. Andrew Kendrot II, C.P.A.  
Miss Mary Ellen Kier  
Ms. Susan Kinney  
Ms. Karen Klimbach-Frank  
Mrs. Leslie Knapp  
Mr. and Mrs. Ronald B. Knight  
Ms. Alice R. Knittel  
Mr. and Mrs. Harold R. Korber  
Mr. and Mrs. Henry M. Korytkowski  
Mr. and Mrs. Felix C. Kozlowski Jr.  
Ms. Helen M. Kramer  
Ms. Barbara Krisay  
Ms. Jean Z. Kuchman  
Mrs. Rita P. Kuder  
Marie and Ken Kulzer  
Mr. and Mrs. David E. LaManna  
Mr. and Mrs. Frank A. Lamanna  
Mr. Frank V. Lanasa  
Ms. Deborah Landry  
Mr. Frank Lapinski  
Mr. and Mrs. Edwin M. Larkin  
Ms. Ann M. Latella  
Mr. and Mrs. Cosmo A. Leccese  
Mr. Percy L. Lee Sr.  
Mr. and Mrs. Robert W. Lenz  
Mr. Louis Lettro  
Ms. Marie Levin  
Mr. and Mrs. Dominic Licata  
Mrs. Sandra L. Loan  
Mr. and Mrs. John Lombardo  
Mr. and Mrs. Louis J. Lombardo  
Ms. Vivian Lombardo  
Mr. Richard E. Lutz  
Dr. Charles A. Maggio, D.D.S.  
Ms. Linda Malone  
Mr. and Mrs. Ray W. Maluta  
Mr. and Mrs. James Mangin  
Ms. Clara E. Marcoux  
Ms. Susan V. Marrone  
Ms. Virginia Mathony  
Ms. Paula A. Maue  
Mr. Gilbert E. McBroom Jr.  
Ms. Kathleen A. McCabe  
Mr. and Mrs. John B. McCarthy  
Mr. Edmund McCormack  
Ms. Norma McElligott  
Molly McGee Randisi  
Ms. Patricia McHugh  
Mr. and Mrs. Edward D. McKeown  
Mr. Edward J. McManus  
Mrs. Marie Melenric  
Mr. and Mrs. Paul D. Merritt

Mr. Gary E. Merz  
 Ms. Barbara Messenger/Delphi Fiance  
 Mr. and Mrs. Darrin J. Meszler  
 Mr. and Mrs. Kenneth J. Meyers  
 Mr. Alfred H. Miller  
 Ms. Verdelle Miller  
 Mr. and Mrs. Robert Molinari  
 Alice Monaghan  
 Dr. and Mrs. Carl F. Montione  
 Mr. Richard Montione  
 Mrs. Nancy A. Morgan  
 Mr. and Mrs. Charles J. Moriarty  
 Mrs. Betsy R. Morse  
 Mr. Richard A. Moss  
 Ewa Mrozek  
 Mr. and Mrs. William A. Mulley  
 Mr. and Mrs. Dennis E. Murray  
 Ms. Genevieve F. Naglik  
 Mr. and Mrs. Norm Neener  
 Ms. Deborah A. Nelson  
 Mr. and Mrs. James J. Nelson  
 Ms. Sandra Nucelli  
 Mr. and Mrs. Donald W. O'Brien Jr.  
 Mrs. Edna L. O'Brien  
 Mrs. Lucille O'Brien  
 Mr. and Mrs. Robert J. O'Brien  
 Mr. and Mrs. Roy J. O'Connell  
 Mrs. Angelina J. Orlando  
 Mr. and Mrs. Vincent Orologio  
 Mr. Matthew B. Otto  
 Mr. and Mrs. Maurizio Palluconi  
 Mr. and Mrs. Ronald E. Palmer  
 Mrs. Nancy M. Palvino  
 Mr. and Mrs. Joseph Pelliciano  
 Ms. JoAnne Penzato  
 Ms. Sue Petty  
 Ms. Gale L. Player  
 Mr. and Mrs. Nicholas J. Plumeri  
 Mrs. Geraldine J. Porter  
 Patricia A. Potenza  
 Ms. Mary A. Puglisi Martinez  
 Ms. Barbara M. Quartley  
 Ms. Donna M. Raeman  
 Ms. Virginia M. Ranaletta  
 Ms. Angie N. Ranalletta  
 Mr. and Mrs. Paul E. Raymond  
 Mr. and Mrs. Alan H. Redfern  
 Mr. David E. Redick  
 Ms. Jean M. Reitzel  
 Mrs. Sharon Reynolds  
 Mrs. Sara Ricci  
 Ms. Bernice F. Ricciuto  
 Steve Rider  
 Mrs. Loretta L. Rischenole  
 Mr. and Mrs. Pasquale Rizzi  
 Mrs. Vivienne B. Rizzo  
 Ms. Jennie Robak  
 Mr. and Mrs. Adriano P. Roberti  
 Mr. and Mrs. Harold J. Robinson  
 Ms. Mary Ann Romanovich  
 Mrs. Fran Rosen  
 Mr. and Mrs. Paul J. Russello  
 Mr. Joseph Sabatowich  
 Mr. Donald A. Salamone  
 Mr. and Mrs. John L. Sale  
 Mr. and Mrs. George A. Salemi  
 Mr. and Mrs. Frank J. Sapienza Jr.  
 Ms. Susan Sarsfield and Mr. Norman Zajac  
 Mr. James E. Schell Sr.  
 Mr. and Mrs. John F. Schickler  
 Mr. and Mrs. Mike Schlmerich  
 Mr. Stephen Schoenfeld  
 Carolyn A. Schoenweitz, R.N.

Ms. Linda Schoepfel  
 Ms. Loretta M. Schreiber  
 Mrs. Laurel J. Schultz, R.N.  
 Mr. Ronald F. Schutt  
 Mr. and Mrs. Alan A. Scinta  
 Mr. and Mrs. Daniel J. Seitz  
 Mr. Jerrold Seldes  
 Mr. Norman Shaddick  
 Mr. and Mrs. James H. Shambaugh  
 Mr. and Mrs. Phillip W. Sheridan  
 Mr. and Mrs. Anthony B. Shults  
 Mr. Stephen Sifling  
 Mr. and Mrs. Thomas E. Simpson  
 Mr. and Mrs. Edward J. Smith  
 Mr. and Mrs. Brian Smith  
 Ms. Harriet A. Smith  
 Ms. Barbara Smullen  
 Ms. Sandra Spengler  
 Mr. John Spennacchio  
 Mr. Carl M. Spinelli Jr.  
 Mr. and Mrs. Joseph Spinelli  
 Mr. and Mrs. Gary A. St. James  
 Mr. John T. St. Martin  
 Mr. and Mrs. Robert C. Steimer  
 Mr. and Mrs. Doug Stephens  
 Mr. and Mrs. Harold Stewart  
 Ms. Mary D. Sturm  
 Daniel Sullivan and  
 Kelly McCormick-Sullivan  
 Mrs. Teresa M. Sullivan  
 Mr. Fred Surace  
 Ms. Blanche J. Talty  
 Mr. P. Hans Tanner  
 Mr. and Mrs. Paul R. Tantalo  
 Mr. and Mrs. Joseph Tantalo  
 Ms. Carlotta Tate  
 Mr. and Mrs. Michael C. Tette  
 Mr. and Mrs. William E. Thomas  
 Ms. Josephine Tiberio  
 Mr. Thomas N. Tischler  
 Mrs. Helen A. Toscano  
 Ms. Carol M. Toste  
 Mr. and Mrs. Stephen C. Trotta  
 Mr. and Mrs. Anthony B. Trotto  
 Mr. and Mrs. Frank T. Trotto  
 Mr. Albert Tufano  
 Evelyn and William Vahue  
 Mr. Thomas Van Griethuysen  
 Mr. Thomas H. Van Griethuysen  
 Ms. Carmella Vaudo  
 Mr. and Mrs. Charles R. VerWeire  
 Ms. Nancy Villone  
 Ms. Marie S. Viola  
 Ms. Sharon L. Viscomi  
 Nancy and Tony Vito  
 Mr. and Mrs. Tracy D. Vogl  
 Mr. Barton Walker and Dr. Robina Walker  
 Mr. Charles F. Weaver  
 Mr. and Mrs. Frank J. Webster  
 Mr. and Mrs. Raymond Webster  
 Ms. Joyce Wechsler  
 Mr. and Mrs. Jerry S. Welcher  
 Mrs. Michelle Westrich  
 Ms. Patricia A. Whalley  
 Ms. Linda J. Wiley  
 Mr. and Mrs. John Wilkosz  
 Mr. Richard J. Williams  
 Mr. Robert L. Wilson and Ms. Ruth L. Hawes  
 Mrs. Anne C. Wischmeyer  
 Mrs. Carol S. Wright  
 Mr. Daniel J. Yargeau  
 Mr. and Mrs. James A. Zielke  
 Mrs. Mary E. Zimny

## United Way Donor Recognition Program

*Many individuals choose to designate Unity Health System programs as recipients of their United Way gifts. A special thanks is extended to the following individuals who have aided the donor choice programs of Unity with their contributions.*

Dr. and Mrs. Robert Agostinelli  
 Mrs. Doreen A. Apsey  
 Ms. Kathleen M. Auberger  
 Mr. and Mrs. Timothy J. Balconi  
 Ms. Joann D. Beck  
 Mr. Mark A. Bianchi  
 Mr. and Mrs. Michael Bierley  
 Dr. Robert M. Biernbaum  
 Mrs. Nancy C. Bigham  
 Ms. Darlene L. Brewster  
 Ms. Nancy J. Burke  
 Mrs. Kristin M. Callen  
 Mrs. Lisa M. Cavey  
 Ms. Carol Chapman  
 Richard and Marjorie Cherkis  
 Ms. Susan L. Coggins  
 Ms. Marianne M. Coleman  
 Mrs. Kelly M. Collins  
 Mrs. Laura H. Davis  
 Mrs. Mary E. Davis  
 Mrs. Jeanine M. DeFeo  
 Ms. Judith Delaney  
 Mr. Robert DiNatale  
 Mr. Paul M. Donahue  
 Mr. and Mrs. Robert Donahue  
 Mr. Adam P. Donnelly  
 Dr. John and Satira D'Souza  
 Mrs. Chana Feinberg  
 Mr. and Mrs. Donald B. Felter Jr.  
 Ms. Kelli A. Fernberg  
 Mr. Gary Fink  
 Mrs. Sandra E. Ford  
 Ms. Alexis Fort  
 Ms. Tracey Frank  
 Charlene A. and Robert W. Frye  
 Mrs. Jean M. Glanville  
 Mrs. Julie A. Hamil  
 Ms. Christine Hayes  
 Ms. Marcia P. Hensler  
 Mr. Warren Hern  
 Ms. Barbara A. Isaman-Bushart  
 Mrs. Roberta S. Jennings  
 Mr. Glenn D. John  
 Mrs. Rebecca M. Jones  
 Ms. Jean V. Kasicova  
 Ms. Linda M. Keon  
 Ms. Joan Kiehl  
 Ms. Elizabeth J. Knight  
 Ms. Valerie Kuhn  
 Ms. Kimberly Longdue  
 Mr. Michael J. Lupiani  
 Mr. Timothy M. Lynch  
 Sandra and James MacWilliam  
 Mrs. Pamela Mancine-Verna  
 Mr. Henry Manczyk  
 James and Lucy Marotta  
 Mr. Michael W. Martinus  
 Mrs. Siglinda McDonell  
 Ms. Molly McGee Randisi  
 Mrs. Anna McLaughlin  
 Mrs. Ann C. Miller  
 Ms. Camilla J. Miner  
 Ms. M. Pamela Mroczek  
 Mrs. Lois A. Musumeci  
 Mr. William A. Neilson

Ms. Prudence A. Nobles  
 Ms. Collette A. Noel  
 Mrs. Jane M. Panzer  
 Mrs. Patricia J. Patton  
 Ms. Deborah Philips  
 Dr. Linda Piazza  
 Ms. Mary K. Quinlivan  
 Mr. Richard Ramirez  
 Mrs. Susan M. Rizkallah  
 Mrs. Deborah Robinson  
 Ms. Lynn Rodak  
 Ms. Gloria Romano  
 Mr. James E. Ruf  
 Mrs. Carol A. Ryan  
 Mr. Donald M. Ryan  
 Ms. Joan P. Saunders  
 Mr. Donald A. Schirmer  
 Mrs. Margaret A. Servis  
 Ms. Lori A. Shamp  
 Mr. and Mrs. George Shukitis  
 Ms. Mariann W. Siembor  
 Ms. Donna Sime  
 Mrs. Cristyn Simone  
 Mrs. Judith K. Smalley  
 Mrs. Candace S. Smith  
 Mr. and Mrs. Patrick Stack  
 Mrs. Theresa A. Steele  
 Mrs. Paula M. Tardge  
 Mrs. Christine Tripoli  
 Mr. Earl M. Tyler  
 Mrs. Katherine Voelkl  
 Mrs. Sue Vogl  
 Mrs. Valerie D. Wells  
 Mr. and Mrs. Matthew Weslowski  
 Ms. Lauren Wildey  
 Mr. Michael Woodbury  
 Ms. JoAnn Zoda

## TRIBUTES

**In Honor of Dr. Robert F. Asbury**  
 Mr. Elliott Landsman  
 Ms. Deborah Ronnen

**In Honor of Burton S. August**  
 Birthday, Holidays & New Year  
 Ms. Paula Stabins Davis

**In Honor of Barbara J. Barker**  
 Mr. and Mrs. Leon T. Sawyko

**In Honor of Paula M. Barker**  
 Mr. and Mrs. Leon T. Sawyko

**In Honor of Robert W. Barker**  
 Mr. and Mrs. Leon T. Sawyko

**In Honor of Dr. Philip P. Bonanni**  
 Mr. Robert H. Hurlbut, Sr.  
 Unity Faculty Partners Group Staff

**In Honor of Dr. Michael R. DiSalle**  
 Unity Faculty Partners Group Staff

**In Honor of Dr. James G. Dolan**  
 Unity Faculty Partners Group Staff

**In Honor of Edna Tina Wilson Living Center Employees**  
 Mr. and Mrs. David A. Patton  
 The Hattie Harris Foundation

**In Honor of Dr. Jeffrey A. Fink**  
 Mr. and Mrs. Cosmo A. Leccese

**In Honor of Dr. Khalid Gadir**  
 Unity Faculty Partners Group Staff

**In Honor of Dr. James M. Haley**

Dr. David H. Hsi  
Unity Faculty Partners Group Staff

**In Honor of Dr. Grama S. Jagadish**

Mr. and Mrs. Cosmo A. Leccese

**In Honor of Dr. Robert Leschingski**

Unity Faculty Partners Group Staff

**In Honor of Mary Ann Mack**

Mrs. Sheila C. Englert

**In Honor of Dr. Hovaness Maronian**

Mrs. Geraldine J. Porter

**In Honor of Dr. Mary Mathew**

Mr. James W. Coate  
Unity Faculty Partners Group Staff

**In Honor of Timothy R. McCormick**

Dr. David H. Hsi  
Mr. Sherman Levey

**In Honor of Theresa McMahon**

Mr. and Mrs. Richard L. Fischette  
Mr. and Mrs. Fred S. Gallina  
Mrs. Sharon Reynolds  
Ms. Mary Ann Romanovich  
Mr. Donald Scheg and Mrs. Catherine Fechter

**In Honor of Stewart C. Putnam**

Dr. David H. Hsi

**In Honor of Dr. Jay P. Rajda**

Unity Faculty Partners Group Staff

**In Honor of Leo T. Sawyko**

Mr. and Mrs. Leon T. Sawyko

**In Honor of Mr. and Mrs. Paul M. Sawyko**

Mr. and Mrs. Leon T. Sawyko

**In Honor of Theodore P. Sawyko**

Mr. and Mrs. Leon T. Sawyko

**In Honor of Frances R. Scarciotta**

Mr. and Mrs. Mark G. Buonaugurio

**In Honor of the Seton Hall Men's Basketball Team**

Mr. Sherman Levey

**In Honor of Dr. and Mrs. Sandy Sorrentino**

Anonymous  
Mr. Henry Cassia, Ph.D.

**In Honor of****Mr. and Mrs. Michael Steblein**

Mr. and Mrs. Leon T. Sawyko

**In Honor of Dr. Michelle Steffers**

Unity Faculty Partners Group Staff

**In Honor of the Woodlock Family**

Mrs. Pat Woodlock

**In Honor of Patricia H. Wehle— Birthday**

Dr. and Mrs. Robert Asbury  
Ashford Advisors LLC  
Burt and Joan August  
Tim and Kathy Balconi  
Mr. and Mrs. Bruce B. Bates  
Mr. and Mrs. C. Terence Butwid  
Mrs. Sarah S. Clapp  
John and Mary Crowe  
Dr. and Mrs. Ronald M. Freeling  
Mrs. Ann S. Garrett  
Lindsay and John Garrett  
Elizabeth and Richard Garrett

Peggy and Tom Hubbard  
Leo and Charlotte Landhuis  
Mr. and Mrs. James F. Mangan  
Mrs. Betsy R. Morse  
Mr. and Mrs. Nathan J. Robfogel  
Mr. and Mrs. Harry P. Trueheart III  
Kevin and Trude Wright

**MEMORIALS**

In many instances, donors have requested their gifts to be used to support particular programs, services, or facilities.

**In Memory of Dr. Robert F. Amberger**

Mr. and Mrs. Alfred W. Amberger

**In Memory of Wilfredo Aponte**

Mrs. Carmen Aponte

**In Memory of Madeleine August**

Anonymous

**In Memory of Rose M. Balls**

Mr. and Mrs. Perry Baldino  
Ms. Marilyn L. Burley  
Mrs. Barbara J. Cotrona  
Mr. Anthony J. Donofrio  
Ms. Lori Eppolito  
Mr. Michael A. Ferraiulo Sr.  
Ms. Dorothy A. Hafner  
Mr. and Mrs. Peter T. Head  
Mr. and Mrs. Robert W. Lenz  
Mr. and Mrs. Ted Piendel

**In Memory of Stephanie S. Barker**

Mr. and Mrs. Timothy Balconi  
Mr. and Mrs. David M. Mehalick

**In Memory of Patricia Barry-Doohan**

Mr. and Mrs. Joseph A. LaLoggia  
Dr. and Mrs. W. Winslow Schrank

**In Memory of Dennis S. Bateman**

Mr. and Mrs. John J. Schwartz

**In Memory of Carl J. Bayer**

Mr. B. Thomas Golisano  
Mr. R. Frank Maxson  
Ms. Sharon Pucher and Mr. Ed Riefelin

**In Memory of Albert G. Berke**

Mrs. Berke  
Mr. and Mrs. Albert L. Corsi  
Ms. Stella Dellarocca  
JetBlue Airways Family  
Mr. and Mrs. David E. LaManna  
Mr. and Mrs. Stephen Nicandri  
Mr. and Mrs. Shane G. O'Leary  
Mr. Frank Palumbo  
Mrs. Jeanne S. Randall – LeClair & Family  
Rochester Americans Exec. Club, Inc.  
Rochester Lead Works, Inc.  
Rochester Police Locust Club, Inc.  
Mr. and Mrs. Alan A. Scinta  
Sentry Group/Maintance Team  
Mrs. Norma L. Waters  
Wegmans Food Markets, Inc.  
Ms. Joyce Wichie

**In Memory of Angelo J. Bianchi**

Mr. and Mrs. James F. Iovino

**In Memory of Anthony M. Bianchi**

Mr. Victor Bonaldi  
Mr. William Derosa  
Ms. Eleanor Formicola  
Ms. Barbara Gombetto

Mr. and Mrs. Roy G. Letta  
Mrs. Patricia L. Malta  
Ms. Marietta Monfalcone  
Mr. and Mrs. J. Michael Mumford  
Mr. and Mrs. Chester J. Palozzi  
Mr. and Mrs. Joseph N. Palozzi  
Mrs. I. Edith Paris  
Ms. Nancy M. Pollatta  
Mrs. Joyce A. Scalzo  
Mr. and Mrs. Charles Stone  
Ms. Donna L. Thompson  
Ms. Bertie Voellinger  
Ms. Mary R. Zaccardo

**In Memory of Mary Bianchi**

Mr. and Mrs. Charles Bellanca  
Mr. and Mrs. William E. Bellows  
Ms. Carmela Bianchi  
Ms. Clementine Ehmann  
Ms. Nancy P. Gardone

**Mr. and Mrs. Joseph V. Lima**

Mrs. Michel Melidona  
Ms. Jennie S. Mickles  
Mr. and Mrs. Ralph J. Rosati  
Mr. James A. Tranquill

**In Memory of Edith M. Binnert**

Unity Health System Volunteer Services

**In Memory of Dr. Erwin J. Boerschlein**

John F. McCabe, M.D.  
Unity Health System Medical Staff

**In Memory of Dr. Francis E. Browning**

Mr. and Mrs. Burton S. August Sr.  
Dr. and Mrs. Robert H. Baysinger  
Dr. and Mrs. Philip P. Bonanni  
Mr. and Mrs. Roger Boulay  
Mrs. Leslie Briggs  
Dr. George G. Browning  
Ms. Carolyn T. Cass  
Mr. Curtis Chamberlain  
Mr. Wendell Discher  
Ms. Anmarie D. Fields  
Mr. and Mrs. Franklin B. Flower  
Mrs. Margaret M. Freeman  
Ms. Helene C. Friedman  
Dr. James and Rita Haley  
Maryalice Keller  
Ms. Shirley Kessler  
Ms. Donna Magraw  
Mr. and Mrs. Timothy R. McCormick  
Monroe County Medical Society  
Mr. James S. Moser  
Mr. and Mrs. Robert Oppenheimer  
Mr. and Mrs. Dan R. Osterhout  
Dr. and Mrs. Ronald M. Penna  
Ms. Mary Jean Petrino  
Dr. and Mrs. Brock H. Powell  
Mr. and Mrs. Charles I. Prey  
Mr. Thomas Riley and Mrs. Barbara Kelley  
Mr. Alan C. Roberts  
Rochester Edge 12U Team Players & Families  
Mrs. Patricia Rubien  
Dr. and Mrs. David J. States  
Dr. and Mrs. David S. Stewart  
Mrs. Beverley B. Tulloch  
Mr. Scott M. Turner and Mrs. Mary A. Worboys  
Unity Health System Medical Staff  
Mrs. Sylvia A. Watkins  
Mrs. John L. Wehle Jr.

**In Memory of John A. Burpee**

Mr. Robert J. Feeney

**In Memory of Stephen M. Candileri**

Unity Health System Volunteer Services

**In Memory of Dr. Samuel Cassara**

Mrs. Jeanette Palumbo

**In Memory of Betty J. Carr**

Mr. and Mrs. Paul E. Raymond

**In Memory of Charles L. Cavallaro**

Anonymous  
BOCES 2—Elementary Science Program Staff  
Ms. Olga Buscaglia  
Mr. and Mrs. Joseph J. Capizzi  
Mrs. Irene Cavallaro  
Mr. and Mrs. Carl T. Dattel  
Mr. and Mrs. Nicholas F. DiChario  
Ms. Carol A. Hall  
Miss Ramona Jorza  
Ms. Betty J. Marotto  
Mr. and Mrs. Bret W. Read & Family  
Mr. and Mrs. James Read  
Mr. and Mrs. Alan H. Redfern  
Mr. Fred Surace  
Mr. and Mrs. Michael C. Tette

**In Memory of Albert J. Cavnuto**

Mr. and Mrs. Donald R. Ignatowski

**In Memory of Roger J. Cirre**

Ms. Mary Z. Genecco

**In Memory of Ward W. Cleveland**

Mr. and Mrs. Arthur L. Frame  
Ms. Linda T. Frankenberger  
Mr. and Mrs. Carl L. Gambacurta  
Mr. and Mrs. Richard Kearney  
LeCesse Construction  
Mrs. Lura M. Loucks  
Ms. Joanne B. Mahoney  
Mr. Guy P. Slack  
Smith Lumber & Hardware Center

**In Memory of Ruth F. Danby**

Mrs. Barbara A. Cragle  
Mrs. Diane L. Hereth

**In Memory of Ada DeAngelis**

Delphi Materials Engineering Department  
Mr. and Mrs. Jack Edmund Gerke  
Ms. Christine Grzymkowski  
Mr. and Mrs. James Haley  
Maryalice Keller  
Mrs. Joan P. Kent

**In Memory of Della W. DeMarle**

Ms. Elizabeth Allardice  
Mr. John F. DeMarle  
Mr. and Mrs. Raymond J. Hasenauer  
Ms. Mary Margaret Ras

**In Memory of Dr. Carlo E. DeSantis**

Mrs. Irene A. DeSantis

**In Memory of Ralph P. DeStephano**

Mrs. Isabel L. Alano  
Mr. and Mrs. Michael Amico  
Mr. and Mrs. Burton S. August Sr.  
Mr. and Mrs. James H. Barr  
Mr. and Mrs. Ronald P. Benjamin  
Mr. and Mrs. Stephen J. Bilovesky  
Mr. Brian R. Blonowicz  
Mr. and Mrs. Roger W. Boily  
Dr. and Mrs. Philip P. Bonanni  
Mr. and Mrs. Robert Booher  
Mr. and Mrs. Matthew D. Bozzelli  
Mr. and Mrs. Theodore H. Braley  
Ms. Anni Breitenborn

Mrs. Paulette P. Briskie  
Mrs. Betsy D. Brugg  
Mr. Frank Brunette  
Buhite & Buhite, D.D.S., P.C.  
Mr. and Mrs. Joe Cappon  
Ms. June A. Cavoti  
Mrs. Marian M. Cavuto  
Mr. and Mrs. Neil P. Cavuto  
Mr. Ron Cavuto  
Mr. and Mrs. Anthony Comparato  
Mr. and Mrs. Brian D. Conlogue  
Mr. and Mrs. Joseph Cordaro  
Mr. and Mrs. Anthony J. Cottrone  
Davie Kaplan, CPA, P.C.  
Mr. and Mrs. Paul J. DeCarolis  
Mr. and Mrs. George DeLucia  
Dr. Surinder Devgun  
Mrs. Evelyn DiCecco  
Ms. Rosemary Eichenlaub  
Mr. and Mrs. Larry Eksten  
Mr. and Mrs. Charles R. Frear  
Gardner Plus Architects, PLLC  
Mr. and Mrs. Roger G. Gilbert  
Mrs. Mary S. Giorgi  
Mr. and Mrs. James Haley  
Ms. Amy Hayes  
Mr. and Mrs. George E. Hulbert  
Mr. and Mrs. Bernard J. Iacovangelo  
Mr. and Mrs. Donald R. Ignatowski  
Mr. and Mrs. Eugene B. Ignatowski  
Mr. and Mrs. Robert Jackson  
Maryalice Keller  
Ms. Karen Kessler  
Ms. Mary Ann T. Kiely  
Ms. Margaret Kitz  
Dr. Tarun Kothari  
Mr. and Mrs. Michael J. Kozakiewicz  
Mr. and Mrs. R. Krauter  
Mr. and Mrs. Robert J. Krebbeks  
Landmark Group of Brighton, Inc.  
Mr. and Mrs. Glendall C. Larkin III  
LeChase Construction Services, LLC  
Mr. and Mrs. R. Wayne LeChase  
Mrs. Rachel T. LeChase  
Mr. and Mrs. Dennis Levandowski  
Mr. and Mrs. Raymond F. Mack  
Dr. and Mrs. Robert C. McVeigh  
Mrs. Antoinette M. Mele  
Mr. and Mrs. Nicholas W. Peek  
Dr. Prasad Penmetsa  
Ms. Kathleen Peterson  
Mr. and Mrs. S. Phillips  
Mr. and Mrs. Peter A. Pizzutelli  
Mr. and Mrs. Peter Quattrociocchi Jr.  
Mr. George J. Rentsch  
Mr. and Mrs. Donald J. Riley  
Mr. Thomas Riley and Mrs. Barbara Kelley  
Rochester Gastroenterology Assoc., LLP  
Mr. and Mrs. Robert Rock  
Mr. and Mrs. Irwin F. Rubien  
Mr. and Mrs. Loreto Saraceni  
Mr. and Mrs. William C. Schmitt  
Mr. and Mrs. Thomas J. Sidoti  
Mr. and Mrs. Michael J. Spagnola  
Ms. Rena Jo Storti  
Ms. Beverly Strohm  
Trevett Cristo Salzer & Andolina, P.C.  
Mr. and Mrs. Anthony B. Trotto  
Van Putte Gardens Family  
Ms. Joan Wania  
Mrs. John L. Wehle Jr.  
Ms. Judy Weiser  
Mr. Robert L. Wilson and Ms. Ruth L. Hawes

**In Memory of Grace A. Deter**

Mr. and Mrs. Charles J. Moriarty

**In Memory of Ralph J. DeVincentis**

Ms. Stephanie F. Benson  
Mr. and Mrs. Donald K. Brown  
Mr. and Mrs. Mark A. Carselli  
Ms. Julia Caruso  
Colgate Rochester Crozer Divinity School  
Mrs. Mary A. Curcio  
Mr. and Mrs. James B. Harrison  
Mr. and Mrs. Albert Hauck  
Dr. Charles A. Maggio, D.D.S.  
Ms. Bernice F. Ricciuto  
Mrs. Carmela Santangelo

**In Memory of Virginia Dey**

Mr. and Mrs. David M. Allen  
Camp Stella Maris of Livonia, Inc.  
Mr. and Mrs. J. Robert Maney  
Mr. Robert Martin  
Mr. and Mrs. Martin L. Welch

**In Memory of Robert E. Doane**

A & E Transport Friends  
Mrs. Rosemary Lazarus  
Mr. and Mrs. Martin L. Welch

**In Memory of Louis A. Drew**

Mr. and Mrs. Quinton P. Hugger  
Rochester Alumnae Chapter of Delta Sigma  
Theta Sorority

**In Memory of Janice A. Dubey**

Ms. Carolyn J. Burt

**In Memory of Frieder H. Ensslin**

Mr. and Mrs. John H. Atkins  
Ms. Karen S. Conte  
Mrs. Rosanne U. Ehle  
Mr. and Mrs. James K. Foster  
Mr. and Mrs. Gerald H. Gage  
Mr. and Mrs. Clark A. Hamilton  
Mrs. Gloria L. Herrick  
Mr. Richard E. Lutz  
Mrs. Natalie Mathewson  
Ms. Marjorie A. Maybee  
Mr. Brian Parise  
Mr. David Sherburne

**In Memory of John  
and Augusta Fantigrossi**

Mr. and Mrs. Franklin L. Kamp  
Mr. and Mrs. Steven Kupfer  
The Fantigrossi Family

**In Memory of Mary Farace**

Mr. Joe Banach  
Ms. Roseanne Bremner  
Mrs. Amy Bidleman  
Mr. and Mrs. John R. Dixon  
Mrs. Jeanette Donato  
Mr. and Mrs. Mark A. Drexler  
Ms. Sharon A. Finke  
Mr. and Mrs. Brian Flanagan  
Honorable Evelyn Frazee  
and Mr. Thomas A. Klonick  
Mr. and Mrs. John L. Garrett  
Mr. and Mrs. Bernard J. Iacovangelo  
Mr. and Mrs. Stanley Konopko  
Mr. and Mrs. R. Wayne LeChase  
Mr. Scott LeFebvre  
Mr. Jim Manou  
Ms. Cheri Mascitti  
Mr. and Mrs. P. Dom Masters  
Mr. George McCrory  
Ms. Genie McKeown

Medical Motor Service of Roch.  
& Monroe County Sunshine Club  
Monroe County Law Enforcement

American Legion Post 11  
Mr. Jason Nicholson  
Nixon Peabody LLP Firm Individuals  
Mr. and Mrs. Walter J. Ott  
Mrs. Masha Rabkin  
Ms. Alyssa Sand  
Ms. Marianna Surace  
Mr. and Mrs. Joseph Tantalo  
Mr. Jason Torres  
Ms. Laura L. Trost  
Mr. and Mrs. Frank T. Trotto  
Mr. and Mrs. Everett R. Turner  
Mr. Scott M. Turner and Mrs. Mary A. Worboys  
Ms. Bonnie F. Vasquez  
Ms. Dawn Wagner

**In Memory of Jane T. Fasano**

Mr. and Mrs. James F. Iovino

**In Memory of Paul A. Field**

CES Sunshine Club  
Mrs. Jane Hart  
Mr. and Mrs. Daniel E. Hedberg  
Mr. Rene Reixach  
Ms. Marcia Stromquist

**In Memory of Edward H. Fox**

Anonymous

**In Memory of Verne R. Frank**

Ms. Florence M. McComber

**In Memory of Imola Frillici**

Mr. and Mrs. Larry Battisti  
Mr. and Mrs. Ronald F. Bruzzese  
Mr. and Mrs. Robert E. Carmola  
Mr. and Mrs. John Cianciotto  
Mr. and Mrs. Luciano Filippetti  
Mr. and Mrs. Philip H. Garver  
LeCesse Construction  
Mr. and Mrs. Ray W. Maluta  
Ms. Cecilia Palluconi  
Mr. and Mrs. Maurizio Palluconi  
Mr. and Mrs. John P. Pioli  
Mr. and Mrs. Frank Vergari

**In Memory of Michael P. Grammatico**

Ms. Anita M. Barker  
Mr. Carl Cavuoto  
Mr. and Mrs. Harry P. Contant  
Mrs. Edythe W. Ellis  
Mr. William A. Fama  
Mr. and Mrs. Luigi Grammatica  
Mr. and Mrs. Charles B. Hartley  
Mr. George W. Hartley  
Mr. and Mrs. John Lombardo  
Mr. Luigi Martinelli  
Metro Rambling Sams  
Mr. and Mrs. Robert J. O'Brien  
Ms. Sylvia Sylvester

**In Memory of Thomas M. Gunderson**

Mr. Leslie Edgcomb  
Ms. Catherine L. Heier

**In Memory of Louis R. Guzzetta**

Dr. and Mrs. Charles Avallone  
Mr. and Mrs. Stephen B. Calderwood  
Dr. and Mrs. Jack G. Caton  
Mr. and Mrs. Rob Daitz  
Mrs. Irene A. DeSantis  
Mr. Donald Forsyth  
Dr. and Mrs. Carl Gerard

Mr. Douglas C. Gerard and  
Dr. Daniela Gerald, Ph.D.  
Mrs. Gloria P. Hetterich  
Dr. and Mrs. Vito P. Laglia  
Ms. Valerie Milonas  
Mr. John A. Pattist  
Mr. and Mrs. Iwing C. Schafer  
Ms. Dorothy Specia  
Bernard E. Tofany, D.D.S.  
Unity Health System Medical Staff  
Dr. and Mrs. Charles Vacanti  
Wayne County Department of Social Services

**In Memory of John I. Habbersett**

Mrs. Suella C. Habbersett

**In Memory of Hattie Harris**

The Hattie Harris Foundation

**In Memory of JoAnne Hartman**

Ms. Pamela A. Allison  
Mr. and Mrs. Kevin R. Aradine  
Mr. and Mrs. Leonard W. Beagley  
Mr. and Mrs. Robert E. Bell  
Ms. Linda Bennett  
Mr. and Mrs. Roger J. Best  
Mr. and Mrs. Bruce A. Biller  
Russell and Leigh Bird  
Mr. and Mrs. Jerome F. Brixner  
Mr. and Mrs. John P. Brondon  
Mr. and Mrs. Albert Capone  
Miss Louise M. Carcelli  
Mr. Albert A. Cosmano  
Mr. and Mrs. Gerald F. Daley  
Dance Rochester Members  
Mr. and Mrs. Joseph R. Davis Sr.  
Ms. Esther M. Eagan  
Mr. and Mrs. David D. Egan  
Ms. Margaret C. Ervin  
Mrs. Mary Jo Favata  
Mr. John B. Fitzsimmons  
Ms. Marilyn B. Fredericks  
Mrs. Denyel M. Galle-Mattia  
Mr. and Mrs. David A. Georger  
Mr. and Mrs. David J. Georger  
Mrs. Mary Jo Gizzi-Anis  
Mr. and Mrs. Clarence A. Hagler  
Mr. and Mrs. Bernie Hartman  
Mr. and Mrs. Todd C. Hartman  
Mr. Phillip G. Hartman  
Mr. and Mrs. Dale L. Hitchcock  
Holy Sepulchre Cemetery  
Mrs. Minh N. Hubert  
Mr. and Mrs. Matt Itterman  
Mr. and Mrs. Paul Jackson  
Mr. and Mrs. William P. Jones  
Mrs. Mary Frances Kolbuc  
Mrs. Margaret P. LaPorta  
Mr. and Mrs. James Mangin  
Manning, Squires, Hennig Co., Inc.  
Mr. and Mrs. Michael A. Mason  
Mr. and Mrs. Donald L. McCabe  
Mr. and Mrs. John R. McCabe  
Mr. Salvatore J. Mingoa  
Mr. and Mrs. John K. Oberlies  
Mrs. Nancy M. Palvino  
Ms. Nancy F. Piccarreto  
Ms. Linda Postler  
Ms. Barbara M. Quartley  
Mr. Bruce J. Randall  
Mr. and Mrs. Harold J. Robinson  
Mr. Robert M. Rule  
Mr. and Mrs. Jeffrey R. Sawyer  
Mr. and Mrs. John F. Schickler

Mr. and Mrs. Mike Schlerich  
Mr. Ronald F. Schutt  
Mr. Eugene N. Schwenger, C.P.A.  
Ms. Joan E. Segerson  
Mr. and Mrs. George P. Sichak  
Ten Ugly Men, Inc.  
Mr. and Mrs. Stephen C. Trotta  
Ms. Sharon L. Viscomi  
Ms. Barbara E. Walsh  
Mr. Nguyen N. Webster  
Ms. Patricia A. Whalley  
Mr. and Mrs. Peter F. Yaman  
Mrs. Barbara Zielke  
Mr. and Mrs. James A. Zielke

**In Memory of Beverly A. Hern**

Mr. and Mrs. Kenneth Dede  
Mr. David Gardner/  
Gardner Plus Architects, PLLC  
Harris Beach PLLC  
Mr. and Mrs. David M. Mehalick  
Dr. and Mrs. W. Winslow Schrank

**In Memory of Janet W. Hessney**

The W.I.S.E. Greece Ladies Group

**In Memory of Charles P. Hilbert**

Mrs. Jeanette Palumbo

**In Memory of Beatrice R. Hyde**

Kathy and Bernard Decker  
Tom and Nancy Vivlamore  
Peg Vivlamore

**In Memory of Angelo P. Infantino**

Mrs. Licia C. Infantino

**In Memory of Margaret R. Johnson**

Mrs. Margaret P. LaPorta

**In Memory of Clare Kelley**

Mr. and Mrs. David L. Klahr

**In Memory of Esther A. Kimble**

Ms. JoAnne Bower  
Carestream Health Family  
Mr. Michael Ducey  
Gleason Works  
Elaine Golding, R.N.  
Ms. Agnes Guyette  
Mr. Bruce D. Kimble  
Ms. Sue Petty  
Ms. Carolyn Schaeffer  
Mr. and Mrs. Donald Schaeffer  
Mr. and Mrs. Harold Schaeffer  
Mrs. Marie Schaeffer  
Mrs. Joan B. Schlegel  
Mr. Stephen Schoenfeld  
Ms. Marilyn Schwab

**In Memory of Joann M. Kinney**

Ms. Claudia R. Manchester  
Mrs. Etheline G. Mayer  
Mr. and Mrs. Gordon E. Turner

**In Memory of Gerald Edward Kolaski**

Mr. Matthew B. Otto

**In Memory of Dr. Kenneth W. Lajewski**

Unity Health System Medical Staff

**In Memory of William H. Lampe**

Mr. and Mrs. Robert Brown  
Ms. Debra Drennan and Mr. Steven Fuchs  
Mrs. Karen C. Hiller  
Ms. Sheila Nasradinaj  
Ms. Laura Thomas  
Kelly Scott  
Mrs. Coreen Wolfanger  
Ms. Susan Woolaver  
Ms. Mary Zanni

**In Memory of Bernice R. Larnder**

Mr. and Mrs. William G. Mickelson  
Mr. and Mrs. William E. Nolan

**In Memory of Laurel M. Lavell**

Maryalice Keller

**In Memory of Dwight C. Lingenfelter**

Mrs. Thelma Lingenfelter

**In Memory of Ann E. Lintz**

Mrs. Judy Borsz

**In Memory of Dominic A. Lombano**

Ms. Mildred Pembrook

**In Memory of Rose J. Lopiano**

Mr. and Mrs. John R. Lowden

**In Memory of Frederic H. Lucas**

Ms. Philomena Bragg  
Mrs. Jacqueline Michlin

**In Memory of Mary Ellen Lynch**

Ms. Patricia Adesso  
Mr. and Mrs. Curtis V. Amesbury, Jr.  
Mr. and Mrs. Timothy Balconi  
Mr. Robert N. Carafice  
Mr. and Mrs. Glen Coleman  
Ms. Theresa A. Conroy and  
Mr. Raymond H. Ross

Mr. and Mrs. Robert L. Crowley

Ms. Ellen DeBuono

Ms. Ann Delehant

Eastman Kodak Company—  
Corp. Mergers & Acquisitions

Fairport Educators Association

Harter, Secrest & Emery LLP

Mr. and Mrs. Stephen Hicks

Mr. Daniel J. Kolb

Mr. and Mrs. Robert F. Kosinsky

Ms. Barbara Krisay

Mr. and Mrs. Frank A. Lamanna

Mr. and Mrs. R. Wayne LeChase

Mr. Rob McClung and Ms. Mary Lou Guerinot

Ms. Barbara A. Messenger—Delphi Finance

Mr. and Mrs. Darrin J. Meszler

Mr. Mark Murphy

Mrs. Olivia Priday-Patton

Paychex

Ms. Jean M. Reitzel

Mrs. Fran Rosen

Mr. Robert Shradar

Mr. and Mrs. Richard H. Spano

Mr. and Mrs. Frank J. Webster

**In Memory of Rosemarie Magavero**

Mr. Andrew Kendrot II, C.P.A.  
Monroe Extinguishers Company, Inc.

**In Memory of Cataldo "Aldo" Mangione**

Mr. and Mrs. James F. Iovino

**In Memory of Viola M. Markle**

Mr. and Mrs. John Campbell  
Mr. and Mrs. Peter Figliotti  
Mr. and Mrs. Tom Maulucci  
Unity Health System  
Financial Svcs. 2nd. Fl. Canal Ponds

**In Memory of Elizabeth Martin**

Harris Beach PLLC

**In Memory of Anna Masci Nicoletti  
& Loreto Masci**

Mrs. Adua M. Caia  
Mr. Rudy Caia  
Mr. Pasquale Masci  
Mr. Gino Masci  
Mr. Tony Masci  
Mr. Vincenzo Masci  
Ms. Teresa Masci Barnes

**In Memory of Jean Mendolera**

Mrs. Patricia Ann Byrne  
Mr. and Mrs. Richard Derleth  
Mr. and Mrs. J. Arthur Felluca  
Ms. Jane C. Hamera  
Headquarters—Group 2  
Mr. and Mrs. Gerald W. Martin  
Mr. and Mrs. Paul D. Merritt  
Jeanne, Bill and Sheilah Randall  
Mr. and Mrs. Robert E. Riley  
Ms. Susan Sarsfield and Mr. Norman Zajac  
Mr. James E. Schell, Sr.  
Mrs. Marie Schwartz  
Mr. and Mrs. Robert C. Steimer  
Mr. and Mrs. Alfred R. Wojtylak

**In Memory of Salvatore J. Mingoea**

Mr. and Mrs. Paul J. Russello  
Mr. and Mrs. Robert P. Russello

**In Memory of Dominic Munno**

Mr. Mark Bianchi

**In Memory of Edward S. Murtagh**

Mr. and Mrs. James Andre  
Mr. and Mrs. William Bartholomay  
Ms. Mary Ann Lomondo

**In Memory of Dr. Rajendra K. Nihalani**

Mr. Eric Borzino  
Irene, Joseph & Liz Dickey  
Dr. Surinder and Mrs. Satvinder Devgun  
Ms. Emily Glotzer  
Mr. Michael Horgan  
Drs. Tarun and Kamal Kothari  
Ms. Lisa Morse  
Mr. Timothy O'Rourke  
Drs. Prasad and Uma Penmetsa  
Rochester Gastroenterology Assoc., LLP  
Ms. Aditya Sankaranarayan  
Unity Health System Medical Staff  
The Valentino Family  
Ms. Dana Van Tassel

**In Memory of Frank C. Naglik**

Ms. Rose Mary Hardick  
Ms. Deborah Landry  
Ms. Genevieve F. Naglik

**In Memory of Patricia Naglik**

Ms. Rose Mary Hardick  
The Landry Family  
Ms. Genevieve F. Naglik

**In Memory of Mary Q. Noonan**

Mr. Ned Ballatori  
Ms. Debra Bendschneider

Mr. and Mrs. James L. Blood  
Ms. Marian J. Caffrey  
Mr. and Mrs. Richard G. Ensman  
Mr. and Mrs. Syl Gionta  
Mrs. Beverley J. Goodell  
Ms. Margaret A. Huerter  
Mr. and Mrs. Harry Ivanuska  
Ms. Jean Z. Kuchman  
Mr. and Mrs. Louis J. Lombardo  
Mr. and Mrs. Walter J. Mallett  
Ms. Paula A. Maue  
Mr. Daniel McHugh  
Ms. Patricia McHugh  
Ms. Vella Meadows  
Orthopaedics Inst. of Dayton Co-Workers  
Ms. JoAnne Penzato  
Ms. Emily Putano  
The Quinns of Ohio, Georgia and Virginia  
Ms. Harriet A. Smith

**In Memory of Richard A. Nundy**

Anonymous  
Ms. Jeanne S. Dill  
Ms. Florence Klafehn  
Mr. Peter N. McCann  
Mrs. Laurie Neubauer  
Kelly O'Connell  
Ms. Mildred Pembrook  
Mrs. Louise Russell  
Ms. Virginia Stalzer  
The Leo Bernabi Faculty & Staff

**In Memory of Helen W. Olmstead**

Mrs. Margaret P. LaPorta

**In Memory of Linda L. Ottley**

Ms. Sharon W. Hoover  
Ms. Linda J. Wiley

**In Memory of Michelina F. Palumbo**

Ms. Margaret Anthony  
Ms. Mary Baccaro  
Mr. and Mrs. Alfonso A. Bellini  
Ms. Susan M. Brower  
Mr. and Mrs. James R. Carter  
Mr. and Mrs. Lawrence A. Cimino  
Ms. Mae A. Cocchiara  
Ms. Lucille M. Connell  
Mr. and Mrs. Art Contreras  
Mr. and Mrs. Thomas M. Hally  
Mr. and Mrs. Mark E. Hull  
Ms. Linda Malone  
PM Investments  
Mrs. Loretta L. Rischenole  
Ms. Ann Rosenzweig  
Mr. Stephen Rosenzweig & Family  
Mr. and Mrs. Daniel J. Seitz  
Ms. Kathleen Seitz  
Ms. Karen Sine Pound  
Ms. Edna Sterling

**In Memory of Dr. R. Harold Parmalee**

Unity Health System Medical Staff

**In Memory of Dominic J. Parrone**

Mr. and Mrs. Russel L. Coon  
Mrs. Mary I. Lombano

**In Memory of Cecelia M. Petry**

Mrs. Isabel L. Alano  
Mr. and Mrs. Timothy Balconi  
Mrs. Carmella Benvenuto  
Dr. and Mrs. Philip P. Bonanni  
Mrs. Marian M. Cavuto  
Mr. Joseph Fornuto  
Mr. and Mrs. Charles R. Frear

Mr. and Mrs. F. Hurysz  
Mr. and Mrs. Donald R. Ignatowski  
Maryalice Keller  
Mr. and Mrs. Richard Kosko  
Mr. and Mrs. Robert J. Krebbeks  
Mr. and Mrs. William E. Nolan  
Mr. and Mrs. Alan J. Smith

**In Memory of Mary E. Putnam**

Dr. and Mrs. Philip P. Bonanni  
Grace Covenant Church—  
Ladies Prayer Adventure Group

**In Memory of John J. Puttock**

Ms. Cherie Bevona and Mr. Raul Fernandez  
Mr. and Mrs. James C. Bittles  
Ms. Joanne D. Hirsch  
Mr. and Mrs. Warner K. Meininger  
Ms. Patricia P. Sullivan  
Mr. and Mrs. Theodore Taylor  
Mr. and Mrs. James A. Wyant

**In Memory of Ann Reding**

Mr. Thomas Reding

**In Memory of Doris A. Rennie**

Mr. Francis D. Jung

**In Memory of Ruth Ritchie**

Mr. and Mrs. Harold Cady  
Mr. and Mrs. Donald G. DuBiel  
Mr. and Mrs. David M. Scheg  
Ms. Bonnie Spohn Gottorff  
Ms. Nancy Villone

**In Memory of Mary Rotolo**

Ms. Paula A. Giudice

**In Memory of Joel C. Rotunno**

Mr. and Mrs. Timothy R. McCormick

**In Memory of Edward D. Rowley**

Ms. Ruth C. Hoppe  
Mrs. Sandria Kuehne  
Mr. and Mrs. William R. Udicious  
Mr. and Mrs. Donald F. VanLare

**In Memory of Carol Rule**

Ms. Pat Bell  
Mr. and Mrs. William F. Blake Jr.  
Mr. and Mrs. Dennis J. Byrne  
Mr. Robert N. Carafice  
Coronet  
Mr. and Mrs. Martin B. Cunningham  
Mr. Don Doane  
Mr. and Mrs. Thomas E. Donlon  
Mr. and Mrs. Jack Eberhard  
Ms. Carol Ferro  
Mr. and Mrs. William Finnerty  
Mr. Gene J. Foster, C.F.A.  
Ms. Patricia Gatti  
Mr. and Mrs. Richard C. Giglio  
Mr. and Mrs. Rick Giglio, Ms. Diane Hoskins  
and Susanne Schafers  
Mr. and Mrs. Bernie Hartman  
Ed, Katie, Ayden & Ryleigh Kelley  
Mr. and Mrs. Edward G. Kelly  
Ms. Karen Klimbach-Frank  
Mr. and Mrs. Ronald B. Knight  
Mr. and Mrs. Edwin M. Larkin  
Ms. Cecelia M. Leber  
Mr. and Mrs. Jeffrey J. LeBlanc  
Mr. and Mrs. R. Wayne LeChase  
Mr. and Mrs. James Lyons  
Mr. and Mrs. Anthony J. Malone  
Mr. and Mrs. J. Robert Maney  
Mr. and Mrs. Albert J. Marrapese Jr.

Patrick, Julie & Heather McGrain

Mr. Alfred H. Miller  
Ms. Judy Misiurewicz  
Dr. and Mrs. Carl F. Montione  
Mr. Richard Montione  
Mr. and Mrs. Thomas P. Mulhern  
Ms. Betty Nyhan  
Oak Hill Country Club Women's Association  
Optimization Industrial Services, LLC  
Mr. and Mrs. Bradley E. Pollak  
Ms. Barbara M. Quartley  
Mr. Bruce J. Randall  
Mr. David E. Redick  
Mr. Thomas Reding  
Mr. Robert M. Rule  
Mr. and Mrs. Doug Stephens  
Ms. Debra L. Watkins  
Ms. Elizabeth Weber Worden  
Ms. Katherine R. Woodard

**In Memory of Kevin F. Ryan**

Dr. Thomas and Mrs. Christine Arnone  
Mr. and Mrs. Timothy McCormick  
Unity Health System Administration Staff

**In Memory of Kevin F. Ryan  
and Mark J. Ryan**

Dr. and Mrs. Gerald F. Ryan

**In Memory of Margaret Ryan**

Mr. and Mrs. Walter G. Martin

**In Memory of Helen A. Salata**

Mr. and Mrs. Jack Abbott  
Doug, Elizabeth and Sarah Daligga  
Mrs. Marjorie F. Ensslin  
Mr. and Mrs. Charles Feerick  
Mrs. Joan Z. Filiere  
Ms. Rita L. Gardner  
Mr. Roy Guess & Rita  
Ms. Ann Heyer  
Ms. Deborah A. Nelson  
Mr. Edward T. Murphy  
Ms. Maureen Murphy  
Mr. Timothy Murphy  
Steve and Sally VanVyve

**In Memory of Evelyn Scheg**

Mr. and Mrs. Norm Neener

**In Memory of Josephine A. Schwind**

Mrs. Leslie Knapp

**In Memory of Nancy C. Scipioni**

Mr. Steven J. Scipioni & Family

**In Memory of Nunzio A. Sciscioli**

Mrs. Jeanette Palumbo

**In Memory of Michael J. Siracuse**

Mr. and Mrs. Lawrence A. Ansini  
Ms. Jane S. Banta

**In Memory of Marie F. Smarcz**

Ms. Oleta Feltes  
Mr. Gary E. Merz  
Mr. and Mrs. James C. Murphy  
Mr. and Mrs. Timothy B. Ribis  
Mr. and Mrs. Phillip W. Sheridan  
Mr. and Mrs. Thomas E. Simpson  
Ms. Mary D. Sturm  
Mr. Darryl Tygart  
Ms. Marie S. Viola  
Mr. and Mrs. Jerry S. Welcher

**In Memory of Elwood M. Smith**

Ms. Sandra DiBenedetto-Nacy  
Mrs. Mary Jo Favata

**In Memory of Louise Solowij**

Mr. and Mrs. Peter Aubry  
Ms. Laurie Bauer  
Mr. and Mrs. Victor J. Ingrassia  
Mr. and Mrs. Frank E. Mucha  
Mr. and Mrs. Donald F. Thibault

**In Memory of Gerald W. Spezzano**

Mr. and Mrs. Bill Anderson  
Ms. Marsha R. Avery  
Mr. and Mrs. Daniel R. Beaty  
Ms. Patricia F. Bishop  
Margaret G. Bodine and Randall J. Ogden  
Mr. and Mrs. Gary Bradley  
Mr. and Mrs. Russell Brown  
Mr. Donn J. Calabrese  
Mr. and Mrs. Norman J. Carney  
Mrs. Helen Cole  
Mrs. Barbara Dechario  
Mr. and Mrs. G. Ernest Donnan  
Mr. and Mrs. Jerry A. DuFresne  
Ms. Virginia Durbin  
Mr. and Mrs. Ronald G. Eddy  
Ms. Constance B. English  
Gerry and John Ernst  
Ms. Mary Ann Fink  
Ms. Janet W. Fitch  
Mr. and Mrs. Ronald J. Gillenkirk  
Mr. Raymond T. Gilman  
Mr. and Mrs. Alfred R. Haas  
Mr. Herbert J. Hawley  
Mr. and Mrs. Robert House  
Mr. and Mrs. Roger House  
Mr. and Mrs. Thomas Ippolito  
Mr. Patrick M. Keefe, Esq.  
Mr. and Mrs. Stephen Kovaly  
Mr. and Mrs. George O. Kukla  
Mr. and Mrs. Larry Lippincott  
Ms. Vivian Lombardo  
Mr. and Mrs. Alvie F. Mahar  
Mrs. Margaret McCaughey  
Mr. and Mrs. Arthur H. Messinger  
Ms. Verdelle Miller  
Mr. William Mueller  
Dr. Karla L. Mulligan  
Mr. and Mrs. Donald W. O'Brien Jr.  
Mr. and Mrs. Vincent Orologio  
Mr. and Mrs. Peter A. Pizzutelli  
Mr. and Mrs. Bruce Rankin  
Sage Ruttly & Company, Inc.  
Mr. and Mrs. Robert W. Shipman  
Mr. Stephen Sifling  
Ms. June Simms  
Mr. and Mrs. Roger E. Smith  
Ms. Dorothy Stapley  
Mr. and Mrs. Harold Stewart  
Mr. P. Hans Tanner  
Mr. and Mrs. Robert L. Walker  
Mr. and Mrs. John Webster  
Ms. Joyce Wechsler  
Mr. and Mrs. Jon P. White  
Woods Oviatt Gilman LLP  
Mr. and Mrs. Richard K. Woolston

**In Memory of Ann R. Spinelli**  
Anonymous  
Ms. Erna H. Bowman  
Mr. Gerald A. Palmer  
Mr. and Mrs. Edwin G. Ranous  
Ms. Barbara Sorg  
Mr. and Mrs. Joseph Spinelli  
Mr. Earl F. Telschow  
Mr. and Mrs. Carl Tudor  
Mrs. Kathleen Whitlock

**In Memory of Francena P. Stafford**

Mrs. Lisa Varley

**In Memory of Walter Lloyd Stanzel**

Mr. and Mrs. David J. Stanzel

**In Memory of Richard H. Starrett**

Mr. and Mrs. Jack M. Hultz  
Mr. and Mrs. Russell C. Marron  
Ms. Jillian Willoughby

**In Memory of Andreja Stefanovic**

Ms. Carolyn S. Fafinski  
WXXI Public Broadcasting Council

**In Memory of Martha M. Stemp-Brown**

Mrs. Ella P. Briskie

**In Memory of E. Patricia Stockmaster**

Mrs. Eleanor M. Welzmueller

**In Memory of Dr. E. Edward Strobino**

Dr. Jane Strobino

**In Memory of Lodie H. Tabone**

Mr. and Mrs. R. Alfred Bergeron  
Mr. and Mrs. Anthony DePetres  
Ms. Blanche L. Foks  
Ms. Paula A. Giudice  
Mr. and Mrs. Paul Koroniwsky  
Mascot, Inc.  
Mr. and Mrs. John B. McCarthy  
Mr. and Mrs. Stewart C. Putnam  
Dr. and Mrs. Sandy Sorrentino  
Ms. Blanche J. Talty  
Unity Health System Medical Staff

**In Memory of Eleanor M. Taccone**

Mr. Fredwin C. Gayton Jr.  
Mr. Bruce D. Kimble

**In Memory of Nancy C. Tarricone**

Maryalice Keller

**In Memory of Vincent F. Teresi**

Mr. and Mrs. Frank J. Carra  
Mr. and Mrs. Craig D. Clark  
Mr. and Mrs. Donald Coluzzi  
Edison—School of Business,  
Finance & Entrepreneurship  
Ms. Mary Federico  
Flower City Printing, Inc.  
Mr. and Mrs. Mitchell R. Hetko  
Mr. and Mrs. David L. Johnson  
Mr. and Mrs. Miles L. Kavaller  
Mr. Louis Lettaro  
Ms. Josephine Martellotta  
Micro Instrument Corporation  
Ms. Rae Mungillo and Mr. Ed Fiorino  
Mrs. Esther Petralia  
Mr. and Mrs. George A. Salemi  
Ms. Paula J. Sheinberg  
Mr. and Mrs. Paul R. Tantalo  
Mr. and Mrs. Peter N. Wollke Jr.  
Ms. Madeline B. Zaffuto

**In Memory of Ruth A. Tracy**

Mr. Earl J. Tracy

**In Memory of Helen G. Travis**

Mr. and Mrs. Bruce B. Bates  
Mr. and Mrs. Joseph C. Briggs  
Mr. and Mrs. Dennis S. Buchan  
Mr. and Mrs. William Buckingham  
Ms. Kathleen Caracci  
Mr. and Mrs. Joe Czop & Ms. Mae Bielaski  
Ms. Donna DePeters  
Mr. and Mrs. Anthony J. DiBitetto & Family  
Mr. and Mrs. John R. Duford

Mr. and Mrs. John L. Garrett  
Mr. and Mrs. Richard J. Garrett Jr.  
Mr. and Mrs. Warren B. Gelman  
Mr. and Mrs. Al Heilman  
Ms. Marion V. Kelly  
Mr. and Mrs. Robert Latella  
Mr. Richard A. Moss  
Mr. and Mrs. David A. Patton  
Rochester Female Charitable Society  
Mr. and Mrs. Lawrence M. Schenck  
Sears Alumni Club  
Mr. and Mrs. Edward J. Smith  
Mr. and Mrs. E. Malcolm Wolcott Jr.

#### **In Memory of Ferdinand N.**

##### **VanBranteghem**

Mr. Edward Ackley  
Mr. and Mrs. John W. Davison  
Genesee Valley Chapter Military Officers  
Assoc. of America  
Grecian Craft Club  
Mr. and Mrs. Leonard E. Hall  
Mr. Lee D. Kauffman  
Mr. and Mrs. John Kinsella  
Mr. and Mrs. Charles A. Lawson  
Mr. and Mrs. Richard D. Malta  
Mrs. Alice M. Merritt  
Mr. and Mrs. Calvin A. Miller  
Mr. and Mrs. William L. Raymond  
Ms. Alva L. Redfield

#### **Mr. and Mrs. Andrew W. Ricchueto**

Mr. and Mrs. Gerald Rutalis  
Mr. James C. Rutalis  
Mr. and Mrs. John W. Ryan  
Ms. Rita M. Simpson  
Mrs. Norma L. Waters

#### **In Memory of Anna Velocci**

Mrs. Jeanette Palumbo

#### **In Memory of Jackie D. Vickers**

Mr. and Mrs. Carl W. Behl Jr.  
BOCES 2—Elementary Science Program Staff  
Mr. Richard J. Brady  
Bernice and Ed Breeding  
Mrs. Irene Cavallaro  
Charlotte Appliance  
Ms. Virginia Crosby  
Mr. and Mrs. Richard Demunck  
Mr. and Mrs. Thomas F. Foss  
Mr. and Mrs. Eugene E. Fritz  
Mrs. Mildred Fritz  
Ms. Laurie Fuller  
Mrs. Kelly Gionta  
Mr. and Mrs. Carl E. Hill  
Ms. Clara E. Marcoux  
Mr. and Mrs. Jacob D. Oukes

#### **In Memory of Nancy C. Vito**

ACM Medical Laboratory, Inc.

#### **In Memory of Kenneth J. Vorrasi**

Mr. and Mrs. Richard L. Bates  
Ms. Sheila Bonham  
Ms. Kimberly Bryan  
Ms. Lucille Butler  
Mr. Richard Coe  
James DeLucia, D.D.S.  
Mr. and Mrs. Joseph A. Errigo  
Ms. Sally Falk  
Dr. and Mrs. Colvin L. Gibson  
Mr. and Mrs. Lewis R. Gizzi  
Mr. Ronald L. Grudziecki  
Mr. and Mrs. John S. Hartman

Mr. and Mrs. Todd Hummel  
Mr. Justin Kay  
Mr. Jonathan P. Levi  
Ms. Joanne Lewers  
Mr. and Mrs. Michael Lombardo  
Mr. Peter Lombardo  
Mr. and Mrs. Thomas H. Lynch  
Ms. Anne C. Maiorca  
Ms. Helen McFall  
Richard W. Millard, Ph.D.  
Mr. Michael Miner  
Mr. and Mrs. Robert Molinari  
Mr. Scott Moller  
Mr. and Mrs. Alfred Moretti  
Mr. Howard Morse and Ms. Laura Loeb  
Mr. and Mrs. William A. Mulley  
Ms. Pat Nesbitt and Family  
Mrs. Sara Ricci  
Ms. Jennie Robak  
Mr. Donald A. Salamone  
Ms. Luna Samman  
Mrs. Patricia L. Schroth & Family  
Mr. and Mrs. Robert A. Skitol  
Ms. Barbara Smullen  
Mr. Barton Walker and Dr. Robina Walker  
Mrs. Michelle Westrich  
Mr. and Mrs. Samuel Zinone

#### **In Memory of Donald O. Wacenske**

Ms. Diane Abel  
Dr. Robert Calcagno  
Mr. and Mrs. Bob Dietch  
Mrs. Catherine Dillman  
Mr. and Mrs. John Fisher  
Ms. June Guzzino  
Mr. and Mrs. Gary D. Johnson  
Ms. Sandra Kravetz & Ms. Phyllis Kravetz  
Ms. Geraldine V. Lovetro  
Mr. and Mrs. Robert A. Prevost  
The Traveling Cabaret Family

#### **In Memory of Dorothy M. White**

Unity Health System Volunteer Services

#### **In Memory of Jean G. White**

Ms. Patricia C. Bonawitz  
Janet and Gordon Burris  
Paul D. Capacci, D.D.S.  
Mrs. Carol A. Gardner  
Mr. Douglas E. Hunt  
Ms. Susan M. Reuter  
Unity Health System Medical Staff  
Mrs. Geraldine Wolf

#### **In Memory of Carl M. Yoder**

Mr. and Mrs. John J. Schwartz

#### **In Memory of Robert P. Zimmer**

Ms. Ruth R. Carroll  
Mr. Bruce J. Randall  
Mr. and Mrs. Eric Truby

### **WE REMEMBER**

With deep appreciation for years of special friendship and great sorrow at their passing, Unity Health System remembers the following friends, supporters, volunteers, and co-workers who passed away in 2008.

Mr. R. Stephen Annucci  
Dr. Theophil Artemowych  
Mr. Bobby Charles Bell  
Mr. Thomas F. Bell, Sr.  
Ms. Edith M. Binnert

Dr. Francis E. Browning  
Mr. Ricky Bryant, Jr.  
Mrs. Diane Lee Campbell  
Mr. Stephen M. Candileri  
Mrs. Victoria M. Ciaccio  
Mrs. Mary C. Cleveland  
Mr. Ralph P. DeStephano  
Ms. Virginia Dey  
Ms. Willa Dyson  
Mrs. Katherine M. Eisenhart  
Mr. Donald R. Feicht  
Dr. Louis R. Guzzetta  
Mr. Raymond F. LeChase, Sr.  
Dr. Kenneth W. Lajewski  
Ms. Laurel Lavell  
Ms. Ann E. Lintz  
Ms. Claire Little  
Mrs. Margaret May  
Mrs. C. Louise McConachie  
Mrs. June L. McHugh  
Mrs. Mary G. Maynard  
Dr. R. Harold Parmalee  
Mrs. Cecelia Monica Petry  
Mr. Kevin F. Ryan  
Mrs. Frances J. Schulmerich  
Mrs. Mary E. Smith  
Mrs. Nancy C. Tarricone  
Mrs. Dorothy M. White  
Dr. Jean G. White

### **Gifts-In-Kind**

The following organizations and individuals gave generously of their goods and services to benefit Unity Health System.

Mrs. Frances Allen-Fintel  
Ms. Michele Arnitz  
Ms. Pearl Breedlove  
BrianTheBrush.com  
Ms. Jennifer Cherelein  
Mr. Anthony C. DelVecchio  
Ms. Susan Fiske  
Gerardi Family  
Ms. Jane Giambone  
Dr. and Mrs. David Hsi  
Mr. and Mrs. Lawrence P. Keller  
Mrs. Lorry Knaak  
Mrs. Thelma Mastin  
Ms. Whitney Meyers  
Gemma M. Orsi  
Ms. Caroline Powell  
Ms. Betsy Reddington  
Ms. Linda Schmidt  
Ms. Corinthia Sims  
Mr. Jonathan Specht  
Ms. Elnora Steele  
Mr. and Mrs. Max K. Streibel  
Dr. Joan Thomas  
Mr. Douglas K. Woods  
Ms. Kelly R. Young

### **Guardian Angel Program**

The Guardian Angel Employee Recognition Program provides grateful patients and their family members with the opportunity to support Unity Health System while paying tribute to their special caregiver—the individual or group of individuals who made the difference in their visit or stay at Unity Hospital, one of our medical offices or other Unity health care facilities.

Employees named as Guardian Angels receive a certificate and lapel pin to proudly indicate their nomination, and have their name printed in the Unity Connection.

If you are interested in learning more about this program, please call the Unity Health Foundation at 723-7050 or visit [www.unityhealth.org/guardianangel](http://www.unityhealth.org/guardianangel).

### **ANONYMOUS DONORS**

A number of our donors choose to contribute anonymously. Our deepest thanks to each of them for their generosity.

## **Unity Health Foundation**

### **Mission Statement**

Unity Health Foundation supports the ability of Unity Health System to fulfill its mission by actively encouraging charitable support and providing responsible management of its assets.

### **About the Foundation**

Unity Health Foundation is a 501(c)(3) tax-exempt organization organized for the sole purpose of supporting the mission of Unity Health System and related health care needs. The Foundation is a member of the Rochester Grantmakers Forum and Greece Chamber of Commerce.

A copy of the Foundation's Annual Report may be obtained from the Office of the Attorney General, Charities Bureau, 120 Broadway, New York, New York 10271

**UPCOMING EVENTS**

**Park Ridge Auxiliary  
GPS Raffle**

June 1 – 12, 2009  
Tickets can be purchased at the  
Unity Hospital/Park Place Gift Shop

**Unity Health Foundation /  
Joseph P. Pavone, Jr.  
Memorial Invitational**  
Monday, August 17, 2009  
Shadow Pines Golf Club

**Unity Health Foundation / Mark's  
Pizzeria / Thomas & Marlene Crane  
Memorial Golf Tournament**  
Tuesday, August 18, 2009  
Victor Hills Golf Club

**Unity Health Foundation/30th Annual  
Ralph P. DeStephano Memorial Golf Classic**  
Monday, September 14, 2009  
Brook-Lea Country Club / Mill Creek  
Country Club / Ridgmont Country Club  
Co-Chairs: Tarak Bolt and Jim Pavone



*Philip Wegman (r) and his son Tim cut the ribbon on the recently dedicated portrait honoring Phil's parents, Ed and Lois Wegman. The new Wegman Cottages at the Park Ridge Living Center, scheduled to open in 2010, are named in honor of the couple. Ed Wegman was a long-time trustee and supporter of Unity Hospital and a member of the Northwest Hospital Committee, which was instrumental in the founding of the original Park Ridge Hospital.*

**Park Ridge Living Center Campaign Moving Forward**

**W**ith \$3 million raised to date, Unity Health Foundation is now entering the final phase of its \$4.1 million campaign to help fund the replacement of Park Ridge Living Center on the Unity Park Ridge Campus. "I am pleased to report that many physician leaders have made significant contributions to the project," said Foundation President Tim Balconi.

Physician leadership gifts include pledges of \$25,000 from Ellen and Dr. Reynold Golden, chief of Geriatric Medicine, a pledge of \$100,000 from Dr. Frederick Cohn and his partners at Ide/Borg Radiology, and a pledge of \$10,000 from Gregory D. Lewish, M.D. and William A. Ciszewski, M.D. of Westside

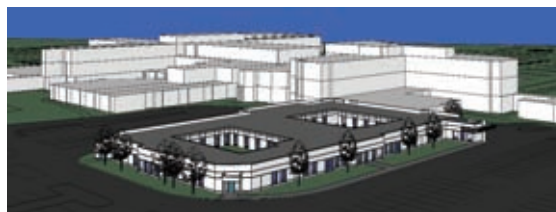
Orthopedic Group. "Physician gifts are a strong vote of confidence for the new Living Center," Balconi added, which will consist of the Ed & Lois Wegman Cottages and the Transitional Care Center.

The existing 35-year-old Living Center is being replaced with a new and innovative design plan unique to western New York. Plans were bolstered early in 2008 by a \$1 million gift from the family of Edwin J. and Lois M. Wegman.

A variety of naming opportunities are available. Please contact the Foundation for a complete list of details.



*The Ed & Lois Wegman Cottages will consist of four separate buildings—each with 20 private rooms and baths, community kitchens, multiple gathering areas, and outdoor courtyards.*



*The 40-bed Transitional Care Center will be attached to the existing Park Ridge Living Center, equipped with private rooms and baths, and a wide range of therapy space for short-term stay patients.*